

Adaptive Mesh Refinement for Multi-Scale FEM for the Eddy Current Problem in Laminated Materials

Markus Schöbinger¹, Joachim Schöberl¹, and Karl Hollaus¹

¹Technische Universität Wien, Vienna, A-1040 Austria, markus.schoebinger@tuwien.ac.at

Solving the eddy current problem on a domain consisting of many thin laminates using a finite element approach requires a mesh with a high number of elements to resolve each laminate, which in turn results in a computationally unfeasible amount of degrees of freedom in the equation system. This work is based on a known multi-scale ansatz which mitigates this problem by solving an averaged problem on a coarse mesh which does not resolve the single laminates and superposing the solution with adequately chosen ansatz functions. This known method is enhanced by the development of a local error estimator based on flux equilibration which allows for adaptive mesh refinement. The ideas will be presented for the single component current vector potential (in the following SCCV potential) in two dimensions.

Index Terms—eddy current, error estimation, multi-scale

I. PROBLEM SETTING

CONSIDER A DOMAIN Ω consisting of a laminated subdomain Ω_m and a surrounding domain Ω_0 , see Fig. 1. The width of one laminate is d_1 and the gaps between the laminates are of width d_2 . The total period width in Ω_m will be denoted $d = d_1 + d_2$. In the applications the laminates represent iron cores separated by air gaps and the surrounding medium is air.

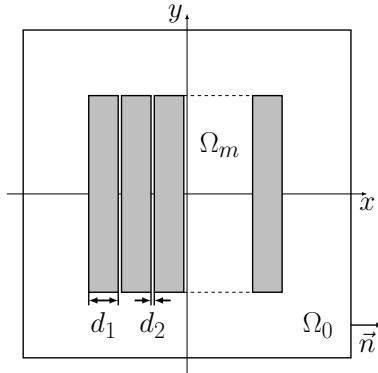


Fig. 1. Schematic of the domain $\Omega = \Omega_m \cup \Omega_0$.

The weak formulation of the problem for the SCCV potential u is given as: Find $u \in H^1(\Omega)$, $u = \alpha$ on $\partial\Omega$ with a given Dirichlet boundary condition α so that

$$\int \rho \nabla u \nabla v + i\omega \mu u v \, d\Omega = 0 \quad (1)$$

holds for every $v \in H^1(\Omega)$, $v = 0$ on $\partial\Omega$, where ρ corresponds to the electric resistivity, μ to the magnetic permeability and ω to the angular frequency.

II. THE MULTISCALE ANSATZ

Following the techniques described in [1], the solution of (1) is approximated using the ansatz

$$u = u_0 + \phi(x)u_1, \quad (2)$$

where the functions u_0 and u_1 are defined on a coarse mesh which does not resolve the single laminates. The micro-shape function ϕ is equal to 0 in air and a quadratic polynomial in each laminate.

The ansatz (2) is used in (1) for the trial function and the test function. This results in the coupled system: Find $u_0 \in H^1(\Omega)$, $u_0 = \alpha$ on $\partial\Omega$ and $u_1 \in H^1(\Omega_M)$, $u_1 = 0$ on the top and bottom boundary of Ω_M , so that

$$\begin{aligned} \int \bar{\rho} \nabla u_0 \nabla v_0 + \bar{\rho} \phi (\nabla u_0 \nabla v_1 + \nabla u_1 \nabla v_0) + \\ \bar{\rho} \phi_x^2 u_1 v_1 + \bar{\rho} \phi^2 \nabla u_1 \nabla v_1 + i\omega \bar{\mu} u_0 v_0 + \\ i\omega \bar{\mu} \phi^2 (u_0 v_1 + u_1 v_0) + i\omega \bar{\mu} \phi^2 u_1 v_1 \, d\Omega = 0 \end{aligned} \quad (3)$$

holds for every $v_0 \in H^1(\Omega)$, $v_0 = 0$ on $\partial\Omega$ and every $v_1 \in H^1(\Omega_M)$, $v_1 = 0$ on the top and bottom boundary of Ω_M , where a bar indicates that the respective quantity is averaged over one period and ϕ_x is the derivative of ϕ with respect to the x coordinate.

III. THE ERROR ESTIMATOR

A. The Theorem of Prager and Synge

The error estimator is based on the theorem of Prager and Synge, which states that if u is the solution of $-\kappa \Delta u = f$ and $\sigma \in H(\text{div})$ a solution of $\text{div} \sigma + f = 0$ satisfying homogenous Neumann boundary conditions, then for every $v \in H^1$ satisfying the same Dirichlet boundary conditions as u , there holds

$$\|(\nabla u - \nabla v)\|_{\kappa}^2 + \|(\nabla u - \kappa^{-1} \sigma)\|_{\kappa}^2 = \|(\nabla v - \kappa^{-1} \sigma)\|_{\kappa}^2 \quad (4)$$

with the energy norm $\|\cdot\|_{\kappa}$ defined as $\|u\|_{\kappa}^2 = \int \kappa \nabla u \nabla u \, d\Omega$. The idea is to substitute the FEM solution u_h for v in (4) to get an upper bound for the error in the energy norm:

$$\|\nabla u - \nabla u_h\|_{\kappa}^2 \leq \|\nabla u_h - \kappa^{-1} \sigma\|_{\kappa}^2. \quad (5)$$

In [2] it is described how to construct a suitable function σ computationally cheaply by calculating local correctors to the

numerical flux $\kappa \nabla u_h$. Using this σ , the right hand side of (5) can be evaluated directly.

B. Application to the Multi-Scale Problem

Consider (3) only for test functions $v_1 = 0$:

$$\int \bar{\rho} \nabla u_0 \nabla v_0 + \bar{\rho} \phi \nabla u_1 \nabla v_0 + i\omega \bar{\mu} u_0 v_0 + i\omega \bar{\mu} \phi^2 u_1 v_0 \, d\Omega = 0 \quad (6)$$

If only u_0 is considered an unknown, depending on a given function u_1 , the expression (6) can be split into a bilinear form on the FEM space of u_0 and a linear right hand side. Using Green's formula in the term containing $\nabla u_1 \nabla v_0$, this leads to

$$\int \bar{\rho} \nabla u_0 \nabla v_0 + i\omega \bar{\mu} u_0 v_0 \, d\Omega = \int \bar{\rho} \phi \Delta u_1 v_0 - i\omega \bar{\mu} \phi^2 u_1 v_0 \, d\Omega - \sum_T \int_{\partial T} \bar{\rho} \phi \frac{du_1}{dn} v_0 \, ds \quad (7)$$

where the sum iterates over all finite elements.

The error estimator can be naturally extended to allow for the right hand side f to contain normal jump terms. To account for the mass term, the setting of the theorem of Prager and Synge has to be extended. The following relation can be shown:

Let u be the solution of $-\kappa \Delta u + \gamma u = f$, then for every $v \in H^1$ satisfying the same Dirichlet boundary conditions as u and every solution $\sigma \in H(\text{div})$ of $\text{div } \sigma + f - \gamma v = 0$ satisfying homogenous Neumann boundary conditions, the estimation

$$\|\nabla u - \nabla v\|_{\kappa}^2 + \|u - v\|_{\gamma}^2 \leq \|(\nabla v - \kappa^{-1} \sigma)\|_{\kappa}^2. \quad (8)$$

holds.

The construction of the estimator can be modified to work in this extended setting, again allowing the construction of a reliable local error estimator.

Similarly, u_1 fulfills

$$\int \bar{\rho} \phi^2 \nabla u_1 \nabla v_1 + (\bar{\rho} \phi_x^2 + i\omega \bar{\mu} \phi^2) u_1 v_1 \, d\Omega = \bar{\rho} \phi \Delta u_0 v_1 - \bar{\rho} \phi [\nabla u_0 \cdot n] v_1 - i\omega \bar{\mu} \phi^2 u_0 v_1 \, d\Omega \quad (9)$$

for all suitable test functions v_1 , which is in the same setting as the corresponding equation for u_0 .

IV. NUMERICAL EXAMPLE

For a simple numerical example a setting with 10 laminates is chosen. The domain Ω_m is given as a square with a side with of 2mm. The fill factor is given as 0.9, i.e. $d_1 = 0.9d$. The electric resistivity ρ is given as $\rho = 5 \cdot 10^{-7} \, \Omega m$ in iron and, to ensure convergence of the numerical method $\rho = 5 \, \Omega m$ in air. The magnetic permeability is $\mu = \mu_0$ in air and $\mu = 10000\mu_0$ in iron.

Fig. 2 shows a comparison of the rotation of the reference solution, which was calculated on a mesh resolving each individual laminate, and the rotation of the solution obtained by solving (3). For the sake of visibility, only the top left corner

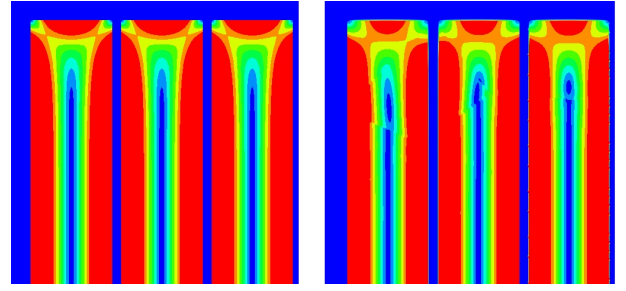


Fig. 2. Absolute value of $\text{curl } u$ for the reference solution (left) and the multi-scale solution (right).

of Ω_m is shown. A fairly good agreement between the two solutions can be observed.

As a next step the error estimator developed above was used to adaptively refine the mesh to improve the quality of the multi-scale solution. Fig. 3 compares the performance of this approach to refining the mesh uniformly in each step. It can be seen that the adaptive refinement gives clearly better results for the same number of unknowns in the equation system.

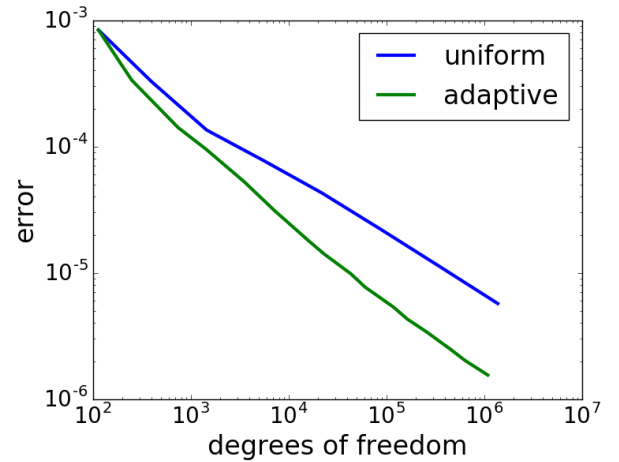


Fig. 3. Error of u_0 and u_1 depending on the degrees of freedom.

V. CONCLUSION

A local error estimator allowing for adaptive mesh refinement has been successfully developed for the case of the SCCV potential. Since in [2] a similar error estimator for functions in $H(\text{curl})$ has been presented using an analogue to the theorem of Prager and Synge for the magnetostatic setting, the ideas presented here might be extendable to multi-scale formulations for the electric vector potential, which is a topic of future work.

VI. ACKNOWLEDGMENT

This work was supported by the Austrian Science Fund (FWF) under Project P 27028-N15.

REFERENCES

- [1] K. Hollaus and J. Schöberl, "Homogenization of the eddy current problem in 2d," ser. 14th Int. IGTE Symp., Graz, Austria, Sep. 2010, pp. 154–159.
- [2] D. Braess and J. Schöberl, "Equilibrated residual error estimator for edge elements," *Math. Comp.*, vol. 77, no. 262, pp. 651–672, 2008.