

ASC Report No. 40/2015

Convergence of a Strang splitting finite element discretization for the Schrödinger-Poisson equation

W. Auzinger, T. Kassebacher, O. Koch and M. Thalhammer

Institute for Analysis and Scientific Computing —
Vienna University of Technology — TU Wien
www.asc.tuwien.ac.at ISBN 978-3-902627-05-6

Most recent ASC Reports

- 39/2015 *T. Apel, J.M. Melenk*
Interpolation and quasi-interpolation in
 h - and hp -version finite element spaces (extended version)
- 38/2015 *H. Woraceki*
xxxx
- 37/2015 *A. Jüngel and N. Zamponi*
Quality behavior of solutions to cross-diffusion systems from population dynamics
- 36/2015 *A. Jüngel and W. Yue*
Discrete Beckner inequalities via the Bochner-Bakry-Emery approach for Markov chains
- 35/2015 *J. Burkotová, I. Rachunková, M. Hubner, E. Weinmüller*
Numerical evidence of Kneser solutions to a class of singular BVPs in ODEs.
- 34/2015 *O. Koch, S. Schirrhofer, E. Weinmüller*
Numerical simulation of the Korteweg-de Vries Equation for shallow water waves.
- 33/2015 *S. Börm and J.M. Melenk*
Approximation of the high-frequency Helmholtz kernel by nested directional interpolation
- 32/2015 *F. Achleitner, A. Arnold, E.A. Carlen*
On hypocoercive BGK models
- 31/2015 *M. Feischl, T. Führer, M. Niederer, S. Strommer, A. Steinboeck, and D. Praetorius*
Efficient numerical computation
of direct exchange areas
in thermal radiation analysis
- 30/2015 *B. Düring, P. Fuchs, and A. Jüngel*
A higher-order gradient flow scheme
for a singular one-dimensional
diffusion equation

Institute for Analysis and Scientific Computing
Vienna University of Technology
Wiedner Hauptstraße 8–10
1040 Wien, Austria

E-Mail: admin@asc.tuwien.ac.at
WWW: <http://www.asc.tuwien.ac.at>
FAX: +43-1-58801-10196

ISBN 978-3-902627-05-6

© Alle Rechte vorbehalten. Nachdruck nur mit Genehmigung des Autors.



CONVERGENCE OF A STRANG SPLITTING FINITE ELEMENT DISCRETIZATION FOR THE SCHRÖDINGER-POISSON EQUATION *

WINFRIED AUZINGER¹, THOMAS KASSEBACHER², OTHMAR KOCH³ AND
MECHTHILD THALHAMMER²

Abstract. Operator splitting methods combined with finite element spatial discretizations are studied for time-dependent nonlinear Schrödinger equations. In particular, the Schrödinger–Poisson equation under homogeneous Dirichlet boundary conditions on a finite domain is considered. A rigorous stability and error analysis is carried out for the second-order Strang splitting method and conforming polynomial finite element discretizations. For sufficiently regular solutions the classical orders of convergence are retained, that is, second-order convergence in time and polynomial convergence in space is proven. The established convergence result is confirmed and complemented by numerical illustrations.

1991 Mathematics Subject Classification. 65J15, 65L05, 65M60 65M12, 65M15.

1. INTRODUCTION AND OVERVIEW

We consider full discretization methods for the time-dependent Schrödinger–Poisson equation, which typically arises in models of quantum transport [11, 21]. Our approach relies on a second-order Strang splitting time discretization combined with a conforming *hp* finite element space discretization. The motivation for the proposed solution method is that separate treatment of the nonlinear part suggests the application of special solvers for the Poisson equation, which are particularly efficient in the context of an underlying finite element space discretization. For this purpose it is common to truncate the unbounded spatial domain to a sufficiently large finite domain and imposing homogeneous Dirichlet boundary conditions.

Our main objective is to provide an error analysis for this full discretization, showing the expected second-order convergence of the Strang splitting method and polynomial spatial error decay corresponding with the finite elements employed. By using Gauss–Lobatto nodes, the setup of the stiffness matrix is exact; the errors arising in the construction of the mass matrix and the right-hand side are of higher order than the discretization error and therefore will not be taken into account.

Splitting methods. The computational advantages of operator splitting methods for the time integration of problems in quantum dynamics have been emphasized in recent literature. A comprehensive overview of

Keywords and phrases: Nonlinear Schrödinger equations, Operator splitting methods, Finite element discretization, Stability, Local error, Convergence

* *This work was supported by the Austrian Science Fund (FWF) under grants P24157-N13 and P21620-N13, the Vienna Science and Technology Fund (WWTF) under the grant MA14-002 and the Doktoratsstipendium of the University of Innsbruck.*

¹ Technische Universität Wien, Institut für Analysis und Scientific Computing, Wiedner Hauptstraße 8-10, A-1040 Wien, Austria.

² Leopold-Franzens Universität Innsbruck, Institut für Mathematik, Technikerstraße 13, A-6020 Innsbruck, Austria.

³ Universität Wien, Fakultät für Mathematik, Oskar-Morgenstern-Platz 1, A-1090 Wien, Austria.

investigations for time-dependent Gross–Pitaevskii equations is given in [4], which summarizes most of the studies conducted in this field. The Crank–Nicholson finite difference method preserves most of the important invariants like symmetry in time, mass and energy and is unconditionally stable; however, the computational cost for this fully implicit method is considerable, and the conservation properties only hold up to the accuracy of the nonlinear solver. Semi-implicit relaxation methods which only treat the kinetic part implicitly share the conservation properties if only a cubic nonlinearity is present, but they are still computationally expensive and suffer from stability limitations. Semi-implicit finite difference schemes lose most of the desired properties. For regular solutions, time-splitting methods in conjunction with Fourier- or Sine-spectral methods are overall concluded to be the most successful discretization schemes; they are unconditionally stable, conserve norm, energy, and also dispersion, which is not the case for many other time-stepping schemes. For non-smooth or random spatial profiles, the spectral accuracy may be lost, however, and thus splitting methods in conjunction with finite difference spatial discretizations may be more efficient (see [8]).

Recently, full discretization of the Schrödinger–Poisson equation by splitting methods in conjunction with spectral space discretization has been investigated in [9], where the long-range interaction is approximated efficiently by nonuniform fast Fourier transform (NUFFT). The authors conclude superior accuracy and performance of their approach in particular over the Sine-spectral method.

Error analysis. The stability and error behavior of operator splitting methods for the Schrödinger–Poisson equation have first been analyzed in [29]. For the structurally similar equations associated with the multi-configuration time-dependent Hartree–Fock method, a complete convergence analysis of high-order splitting methods has been given in [27]. An error analysis of splitting methods applied to the Schrödinger–Poisson equation in the semiclassical regime is provided in [12].

Finite element method. The literature on finite element spatial discretizations is vast. Finite element methods (FEM) have been widely used for electronic structure calculations, see for instance [15, 36] and [7, 14, 32, 39]. For the solution of time-dependent Schrödinger equations see for example [22, 38] and the more recent contribution [24], and for atomic and molecular systems see [20] for a general review.

Truncation to a finite domain. In conjunction with the application of the finite element method, the restriction to a finite domain introduces a truncation error which we do not consider in this work. Strategies to cope with related issues have been proposed for instance in [5]. The investigation in the context of the Schrödinger–Poisson equation remains an open question.

Outline. In Sec. 2 we state the Schrödinger–Poisson equation and specify the full discretization method. In Sec. 3 and 4 we provide a comprehensive stability and error analysis. Our numerical illustrations given in Sec. 5 confirm the theoretical convergence result and demonstrate that also higher-order splitting methods show their expected behavior. The appendices contain important results from the literature which we rely on and auxiliary estimates used in our analysis.

2. PROBLEM SETTING AND DISCRETIZATION METHOD

2.1. Problem setting

Schrödinger–Poisson equation. We consider the time-dependent Schrödinger–Poisson equation for $\psi: \Omega \times [0, T] \rightarrow \mathbb{C}$, $(x, t) \mapsto \psi(x, t)$,

$$i \partial_t \psi(x, t) = -\frac{1}{2} \Delta \psi(x, t) + \Delta^{-1}(|\psi(x, t)|^2) \psi(x, t), \quad (2.1a)$$

where $\Omega \subset \mathbb{R}^d$, $d \in \{2, 3\}$, is a bounded domain with smooth boundary. We impose homogeneous Dirichlet boundary conditions and an initial condition

$$\psi(x, t)|_{x \in \partial\Omega} = 0, \quad \psi(x, 0) = \psi_0(x). \quad (2.1b)$$

For the subsequent analysis we will assume that the initial state satisfies¹ $\psi_0 \in H^2 = H^2(\Omega)$. The nonlocal nonlinear term $\Delta^{-1}(|\psi|^2)$ describing the electrostatic self-interaction is the solution Θ of the Poisson equation under homogeneous Dirichlet boundary conditions,

$$\Delta\Theta(x, t) = |\psi(x, t)|^2, \quad \Theta(x, t)|_{x \in \partial\Omega} = 0. \quad (2.1c)$$

The evolution operator associated with problem (2.1) will be denoted by φ_{SP} , i.e.,

$$\psi(\cdot, t) = \varphi_{\text{SP}}(t, \psi_0).$$

Abstract formulation. Introducing the operator notation

$$\begin{aligned} A: H^2 \cap H_0^1 &\rightarrow L^2: u \mapsto \frac{1}{2} i \Delta u, \\ \widehat{B}: H_0^1 &\rightarrow H^2 \cap H_0^1: w \mapsto -i \Delta^{-1}(|w|^2), \\ B: H_0^1 &\rightarrow H_0^1: u \mapsto -i \Delta^{-1}(|u|^2) u, \end{aligned} \quad (2.2a)$$

we employ a compact formulation of problem (2.1) as an abstract evolution equation

$$\begin{cases} \partial_t \psi = A \psi + B(\psi) = A \psi + \widehat{B}(\psi) \psi, \\ \psi|_{t=0} = \psi_0. \end{cases} \quad (2.2b)$$

2.2. Semidiscretization in time by the Strang splitting method

Subproblems. For the discretization of (2.2b) in time we apply exponential operator splitting methods based on the solution of two subproblems, see for instance [18, 30].

- The evolution operator associated with the linear initial value problem

$$\begin{cases} \partial_t \psi = A \psi, \\ \psi|_{t=0} = u, \end{cases} \quad (2.3a)$$

is denoted by $\varphi_A(t)$, such that

$$\psi(\cdot, t) = \varphi_A(t) u. \quad (2.3b)$$

- The evolution operator associated with the nonlinear initial value problem

$$\begin{cases} \partial_t \psi = B(\psi), \\ \psi|_{t=0} = u, \end{cases} \quad (2.4a)$$

is denoted by $\varphi_B(t, \cdot)$, such that

$$\psi(\cdot, t) = \varphi_B(t, u). \quad (2.4b)$$

Due to the fact that $\Delta^{-1}(|\psi(\cdot, t)|^2)$ defines a real-valued function and thus

$$\partial_t |\psi(\cdot, t)|^2 = 2 \Re(\overline{\psi(\cdot, t)} \partial_t \psi(\cdot, t)) = 2 \Re(\widehat{B}(\psi(\cdot, t)) |\psi(\cdot, t)|^2) = 0,$$

the nonlinear equation (2.4a) reduces to the linear equation

$$\begin{cases} \partial_t \psi = \widehat{B}(u) \psi, \\ \psi|_{t=0} = u. \end{cases} \quad (2.4c)$$

¹For simplicity of notation we write L^2, H^k instead of $L^2(\Omega), H^k(\Omega)$, etc.

We will also employ a notation analogous to (2.4c) but with a linear evolution operator \mathcal{E}_B depending on u and w as the solution to

$$\begin{cases} \partial_t \psi = \widehat{B}(w)\psi, \\ \psi|_{t=0} = u, \end{cases} \quad (2.5)$$

such that $\psi = \mathcal{E}_B(t, w) u$. Clearly,

$$\varphi_B(t, u) = \mathcal{E}_B(t, u) u. \quad (2.6)$$

Strang splitting method. Our main focus is on the symmetric second-order Strang splitting method applied to the splitting according to (2.3), (2.4). That is, for a time increment $\tau > 0$, the time-discrete solution values

$$\psi_n \approx \psi(n\tau), \quad n = 0, 1, 2, \dots$$

are determined by the recurrence

$$\psi_n = \mathcal{S}(\tau, \psi_{n-1}) = \varphi_A(\tfrac{1}{2}\tau) \varphi_B(\tau, \varphi_A(\tfrac{1}{2}\tau)\psi_{n-1}). \quad (2.7a)$$

For notational simplicity we shall employ a formal notation for the n -fold composition,

$$\psi_n = \mathcal{S}^n \psi_0 := \underbrace{\mathcal{S}(\tau, \cdot) \circ \dots \circ \mathcal{S}(\tau, \psi_0)}_{n \text{ times}}. \quad (2.7b)$$

Weak formulation of the subproblems. In view of full discretization (see Sec. 2.3) we consider the following weak formulations of the subproblems. For (2.3a),

$$\begin{cases} (\partial_t \psi, \phi)_{L^2} = -\frac{1}{2} \mathbf{i} (\nabla \psi, \nabla \phi)_{L^2} \quad \text{for all } \phi \in H_0^1, \\ \psi|_{t=0} = u, \end{cases} \quad (2.8)$$

where we require $\psi, u \in H_0^1$. For (2.4c),

$$\begin{cases} (\partial_t \psi, \phi)_{L^2} = -\mathbf{i} (\Theta \psi, \phi)_{L^2} \quad \text{for all } \phi \in H_0^1, \\ \psi|_{t=0} = u, \end{cases} \quad (2.9a)$$

where Θ is the solution of the Poisson equation in weak formulation,

$$(\nabla \Theta, \nabla \chi)_{L^2} = -(|u|^2, \chi)_{L^2} \quad \text{for all } \chi \in H_0^1, \quad (2.9b)$$

requiring $\psi, \Theta, u \in H_0^1$.

Conservation and stability properties of the subflows.

Proposition 2.1.

(i) The evolution operator $\varphi_A(t)$ is unitary with respect to $\|\cdot\|_{L^2}$ and $\|\cdot\|_{H^1}$, for $t > 0$ and $u \in H_0^1$,

$$\|\varphi_A(t) u\|_{L^2} = \|u\|_{L^2}, \quad (2.10a)$$

$$\|\varphi_A(t) u\|_{H^1} = \|u\|_{H^1}. \quad (2.10b)$$

(ii) The evolution operator $\varphi_B(t, \cdot)$ is unitary with respect to $\|\cdot\|_{L^2}$ for $t > 0$ and $u \in H_0^1$,

$$\|\varphi_B(t) u\|_{L^2} = \|u\|_{L^2}. \quad (2.11)$$

Proof. (i) We proceed from (2.9a), set $\phi = \psi = \varphi_A(t, u)$,

$$(\partial_t \psi, \psi)_{L^2} = -\frac{1}{2} \mathfrak{i} (\nabla \psi, \nabla \psi)_{L^2},$$

and obtain

$$\partial_t \|\psi\|_{L^2}^2 = \partial_t (\psi, \psi)_{L^2} = 2 \Re (\partial_t \psi, \psi)_{L^2} = \Re (-\mathfrak{i} (\nabla \psi, \nabla \psi)_{L^2}) = 0,$$

which implies (2.10a). Furthermore, setting $\phi = \partial_t \psi = \partial_t \varphi_A(t, u)$ in (2.9a),

$$\|\partial_t \psi\|_{L^2} = (\partial_t \psi, \partial_t \psi)_{L^2} = -\frac{1}{2} \mathfrak{i} (\nabla \psi, \nabla \partial_t \psi)_{L^2},$$

we obtain

$$\partial_t \|\psi\|_{H^1}^2 = \partial_t (\nabla \psi, \nabla \psi)_{L^2} = 2 \Re (\nabla \psi, \nabla \partial_t \psi)_{L^2} = 2 \Re (2 \mathfrak{i} \|\partial_t \psi\|_{L^2}^2) = 0,$$

which together with (2.10a) implies (2.10b).

(ii) For the flow defined by (2.5) and $\psi = \mathcal{E}_B(t, w) u$ we have

$$\partial_t \|\psi\|_{L^2}^2 = 2 \Re (\psi, \widehat{B}(w) \psi)_{L^2} = 2 \Re (|\psi|^2, \widehat{B}(w))_{L^2} = 0,$$

which, in particular, implies (2.11). □

Remark 2.2. More generally, the H^k -norms for $k \geq 1$ are conserved under the flow $\varphi_A(t)$. To see this, we consider the strong formulation (2.3a) with $u \in H^{k+2} \cap H_0^1$ and wish to show that $\|\partial_x^k \psi\|_{L^2} = \|\partial_x^k u\|_{L^2}$ for any partial derivative ∂_x . We compute

$$\partial_t (\partial_x^k \psi, \partial_x^k \psi)_{L^2} = 2 \Re (\partial_x^k \partial_t \psi, \partial_x^k \psi)_{L^2} = 2 \Re (\frac{1}{2} \mathfrak{i} (\partial_x^{k+2} \psi, \partial_x^k \psi)_{L^2}) = \Re (-\mathfrak{i} \|\partial_x^{k+1} \psi\|_{L^2}^2) = 0.$$

Via a density argument, the result also holds for all $\psi \in H^k \cap H_0^1$.

2.3. Conforming finite element discretization of the subproblems

A full discretization arises by solving both initial value subproblems (2.3) and (2.4) in their weak reformulation (2.8) and (2.9), respectively, by means of a finite element method (FEM).

Finite element space. For the space discretization of the subproblems, we choose a tessellation \mathcal{T}^h over subdomains Ω_k , with

$$\Omega = \bigcup_{k=1}^K \Omega_k, \quad h = \max_{k \in \{1, \dots, K\}} \text{diam } \Omega_k,$$

which are affine-equivalent to a reference domain Ω_0 . With Ω_0 we associate a triplet $(\Omega_0, P, \mathcal{N})$, where the set \mathcal{N} comprises the interpolation nodes x_i , and P is the linear space spanned by the polynomial nodal basis functions v_j of degree p . We require the finite elements to be conforming and quasi-uniform. As common we choose a linear indexing of the basis functions, $(v_j)_{j=1}^J$. The subspace spanned by these functions is denoted by

$$\mathcal{V}^h = \text{span}\{v_1, \dots, v_J\} \subset H_0^1. \quad (2.12)$$

Finite element interpolation and projection. By $\mathcal{I}_h: \mathcal{C}(\Omega) \rightarrow \mathcal{V}^h$ we denote the nodal interpolation operator,

$$\mathcal{I}_h(f) = \sum_{j=1}^J f(x_j) v_j. \quad (2.13)$$

The Rayleigh-Ritz projection $\mathcal{P}_h: H_0^1 \rightarrow \mathcal{V}^h$ is defined implicitly by the Galerkin orthogonality relation

$$(\nabla(u - \mathcal{P}_h u), \nabla v_h)_{L^2} = 0 \quad \text{for all } v_h \in \mathcal{V}^h, \quad (2.14a)$$

satisfying

$$|\mathcal{P}_h u|_{H^1} \leq |u|_{H^1} \quad \text{for all } u \in H_0^1. \quad (2.14b)$$

By the Poincaré inequality, this also implies

$$\|\mathcal{P}_h u\|_{H^1} \leq C \|u\|_{H^1} \quad \text{for all } u \in H_0^1, \quad (2.14c)$$

with a constant C depending on Ω .

Remark 2.3. The Rayleigh-Ritz projection \mathcal{P}_h is connected to finite element approximation in the following way. Consider a Poisson problem $\Delta u = f$ with homogeneous Dirichlet boundary conditions in weak formulation (see (2.9b)),

$$(\nabla u, \nabla v)_{L^2} = -(f, v)_{L^2} \quad \text{for all } v \in H_0^1,$$

and its FEM discretization by the Galerkin equations (see (2.16b) below),

$$(\nabla u_h, \nabla v_h)_{L^2} = -(f, v_h)_{L^2} \quad \text{for all } v_h \in \mathcal{V}^h.$$

Then,

$$(\nabla(u - u_h), \nabla v_h)_{L^2} = 0 \quad \text{for all } v_h \in \mathcal{V}^h,$$

i.e.,

$$u_h = \mathcal{P}_h u.$$

Fully discrete solution and computational representation. The full discretization of the Schrödinger-Poisson equation is based on solving the subproblems (2.8), (2.9) arising in the Strang splitting time discretization by means of a FEM/Galerkin space discretization. Here, the coefficients associated with the prescribed initial state are determined by interpolation,

$$\mathcal{I}_h(\psi_0) = \sum_{j=1}^J c_{j,0} v_j \in \mathcal{V}^h.$$

In each substep of the time propagation by Strang splitting, subproblems of the following types (2.15), (2.16) for the solutions $\psi_h \in \mathcal{V}^h$ and $\Theta_h \in \mathcal{V}^h$ are solved.

- For the first subproblem (2.8), ψ_h is determined from

$$\begin{cases} (\partial_t \psi_h, \phi_h)_{L^2} = -\frac{1}{2} i (\nabla \psi_h, \nabla \phi_h)_{L^2} & \text{for all } \phi_h \in \mathcal{V}^h, \\ \psi_h|_{t=0} = u_h. \end{cases} \quad (2.15a)$$

With the ansatz in terms of the basis (2.12),

$$\psi_h(t) = \sum_{j=1}^J c_j(t) v_j,$$

(2.15a) yields the Galerkin equations for the coefficients $c_j(t)$ in the form

$$\sum_{j=1}^J \partial_t c_j(t) (v_j, v_i)_{L^2} = -\frac{1}{2} i \sum_{j=1}^J c_j(t) (\nabla v_j, \nabla v_i)_{L^2}, \quad i = 1 \dots J. \quad (2.15b)$$

- For the second subproblem (2.9), ψ_h is determined such that

$$\begin{cases} (\partial_t \psi_h, \phi_h)_{L^2} = -i (\Theta_h \psi_h, \phi_h)_{L^2} & \text{for all } \phi_h \in \mathcal{V}^h, \\ \psi_h|_{t=0} = u_h, \end{cases} \quad (2.16a)$$

where Θ_h is the solution of the discretized Poisson problem

$$(\nabla \Theta_h, \nabla \chi_h)_{L^2} = -(|u_h|^2, \chi_h)_{L^2} \quad \text{for all } \chi_h \in \mathcal{V}^h. \quad (2.16b)$$

With the ansatz in terms of the basis (2.12),

$$\psi_h(t) = \sum_{j=1}^J c_j(t) v_j \in \mathcal{V}^h, \quad \Theta_h = \sum_{j=1}^J d_j v_j \in \mathcal{V}^h,$$

we obtain the Galerkin equations (2.16b) in the form

$$\begin{aligned} \sum_{j=1}^J \partial_t c_j(t) (v_j, v_i)_{L^2} &= -i \sum_{j=1}^J c_j(t) \sum_{k=1}^J d_k (v_k v_j, v_i)_{L^2}, \quad i = 1 \dots J, \\ \sum_{j=1}^J d_j (\nabla v_j, \nabla v_i)_{L^2} &= - \sum_{j,k=1}^J c_j(0) \overline{c_k(0)} (v_j v_k, v_i)_{L^2}, \quad i = 1 \dots J. \end{aligned} \quad (2.16c)$$

Altogether this results in systems of linear ordinary differential equations for the respective coefficients. For a more compact formulation we introduce the vectors

$$\begin{aligned} c(t) &= (c_j(t))_{j=1}^J \in \mathbb{C}^J, \quad d = (d_j)_{j=1}^J \in \mathbb{R}^J, \\ F(c(0)) &= \left(\sum_{j,k=1}^J c_j(0) \overline{c_k(0)} (v_j v_k, v_i)_{L^2} \right)_{i=1}^J \in \mathbb{R}^J, \end{aligned} \quad (2.17a)$$

and the invertible symmetric matrices

$$\begin{aligned} M &= (M_{ij})_{i,j=1}^J \in \mathbb{R}^{J \times J}, \quad \text{with } M_{ij} = (v_i, v_j)_{L^2}, \\ K &= (K_{ij})_{i,j=1}^J \in \mathbb{R}^{J \times J}, \quad \text{with } K_{ij} = (\nabla v_i, \nabla v_j)_{L^2}, \\ \Phi(d) &= (\Phi_{ij}(d))_{i,j=1}^J \in \mathbb{R}^{J \times J}, \quad \text{with } \Phi_{ij}(d) = \sum_k d_k (v_k v_i, v_j)_{L^2}. \end{aligned} \quad (2.17b)$$

In this notation, the system (2.15b) reads

$$\begin{cases} M \partial_t c(t) &= -\frac{1}{2} i K c(t), \\ c(0) &\text{given,} \end{cases} \quad (2.18)$$

with solution

$$c(t) = e^{-\frac{1}{2} i t M^{-1} K} c(0). \quad (2.19)$$

System (2.16c) takes the form

$$\begin{cases} K d &= -F(c(0)), \\ M \partial_t c(t) &= -i \Phi(d) c(t), \\ c(0) &\text{given,} \end{cases} \quad (2.20)$$

with solution

$$c(t) = e^{-it(M^{-1}\Phi(d))} c(0), \text{ where } d = -K^{-1}F(c(0)). \quad (2.21)$$

To realize the fully discrete propagation in time according to the Strang recurrence (2.7), systems of this type are alternately solved.

Finite element operators. We define the discrete Laplace operator $\Delta_h: \mathcal{V}^h \rightarrow H^{-1}$ ($u_h \mapsto \Delta_h u_h$) and its inverse $\Delta_h^{-1}: H^{-1} \rightarrow \mathcal{V}^h$ ($f \mapsto \Delta_h^{-1}f$) via

$$(\Delta_h u_h, v_h)_{L^2} = -(\nabla u_h, \nabla v_h)_{L^2} \quad \text{for all } v_h \in \mathcal{V}^h, \quad (2.22a)$$

$$(\nabla \Delta_h^{-1}f, \nabla v_h)_{L^2} = -(f, v_h)_{L^2} \quad \text{for all } v_h \in \mathcal{V}^h. \quad (2.22b)$$

In particular, (2.22b) means that for the solution u of $\Delta u = f$ we have

$$\Delta_h^{-1}f = \mathcal{P}_h u = u_h \quad (2.23)$$

in the sense of Remark 2.3.

Moreover, in analogy to (2.2a) we set

$$\begin{aligned} A_h: \mathcal{V}^h &\rightarrow H^{-1}: u_h \mapsto \frac{1}{2}i\Delta_h u_h, \\ \widehat{B}_h: \mathcal{V}^h &\rightarrow \mathcal{V}^h: w_h \mapsto -i\Delta_h^{-1}(|w_h|^2), \\ B_h: \mathcal{V}^h &\rightarrow \mathcal{V}^h: u_h \mapsto -i\Delta_h^{-1}(|u_h|^2)u_h. \end{aligned} \quad (2.24)$$

In this notation,

- $\varphi_{A_h}(t)u_h$ is associated with subproblem (2.15a),
- $\varphi_{B_h}(t, u_h)$ is associated with subproblem (2.16a).

For representing the solution ψ_h of a system of the type

$$\begin{cases} (\partial_t \psi_h, \phi_h)_{L^2} = (\widehat{B}_h(w_h) \psi_h, \phi_h)_{L^2} & \text{for all } \phi_h \in \mathcal{V}^h, \\ \psi_h|_{t=0} = u_h, \end{cases} \quad (2.25)$$

we will also employ an analogous notation as for problem (2.5),

$$\psi_h = \mathcal{E}_{B_h}(t, w_h) u_h. \quad (2.26a)$$

Then, analogously as in (2.6),

$$\varphi_{B_h}(t, u_h) = \mathcal{E}_{B_h}(t, u_h) u_h. \quad (2.26b)$$

For the resulting fully discrete Strang splitting solution we again write

$$\psi_n \approx \psi(n\tau), \quad n = 0, 1, 2, \dots,$$

determined by the recurrence

$$\psi_n = \mathcal{S}_h(\tau, \psi_{n-1}) = \varphi_{A_h}(\frac{1}{2}\tau) \varphi_{B_h}(\tau, \varphi_{A_h}(\frac{1}{2}\tau) \psi_{n-1}), \quad (2.27a)$$

and we again employ a formal notation for the n -fold composition,

$$\psi_n = \mathcal{S}_h^n \psi_0 := \underbrace{\mathcal{S}_h(\tau, \cdot) \circ \dots \circ \mathcal{S}_h(\tau, \psi_0)}_{n \text{ times}}. \quad (2.27b)$$

Conservation and stability properties of the discrete subflows. For our convergence analysis we will make use of the following facts.

Proposition 2.4.

(i) The evolution operator $\varphi_{A_h}(t)$ is unitary with respect to $\|\cdot\|_{L^2}$ and $\|\cdot\|_{H^1}$, for $t > 0$ and $u_h \in \mathcal{V}^h$,

$$\|\varphi_{A_h}(t) u_h\|_{L^2} = \|u_h\|_{L^2}, \quad (2.28a)$$

$$\|\varphi_{A_h}(t) u_h\|_{H^1} = \|u_h\|_{H^1}. \quad (2.28b)$$

(ii) The evolution operator $\mathcal{E}_{B_h}(t, \cdot)$ is unitary with respect to $\|\cdot\|_{L^2}$ i.e., for $t > 0$ and $u_h, w_h \in \mathcal{V}^h$,

$$\|\mathcal{E}_{B_h}(t, w_h) u_h\|_{L^2} = \|u_h\|_{L^2}. \quad (2.29a)$$

For $w_h = u_h$, this implies $\|\varphi_{B_h}(t, u_h)\|_{L^2} = \|u_h\|_{L^2}$. Furthermore, $\mathcal{E}_{B_h}(t, \cdot)$ satisfies the differential inequality

$$\partial_t |\mathcal{E}_{B_h}(t, w_h) u_h|_{H^1} \leq \|\mathcal{E}_{B_h}(t, w_h) u_h \nabla \Theta_h\|_{L^2}, \quad (2.29b)$$

where $\Theta_h = \Delta_h^{-1}(|w_h|^2)$.

Proof. (i) For $u_h \in \mathcal{V}^h$ and $\psi_h = \varphi_{A_h}(t) u_h \in \mathcal{V}^h$ we have $\partial_t \psi_h = \frac{1}{2} i \Delta_h \psi_h$. Hence by (2.22a),

$$\partial_t \|\psi_h\|_{L^2}^2 = \partial_t (\psi_h, \psi_h)_{L^2} = 2 \Re(\partial_t \psi_h, \psi_h)_{L^2} = \Re(i \Delta_h \psi_h, \psi_h)_{L^2} = -\Re(i \nabla \psi_h, \nabla \psi_h)_{L^2} = 0,$$

which implies (2.28a). Furthermore,

$$\begin{aligned} \partial_t |\psi_h|_{H^1}^2 &= \partial_t (\nabla \psi_h, \nabla \psi_h)_{L^2} = 2 \Re(\nabla \partial_t \psi_h, \nabla \psi_h)_{L^2} = -2 \Re(\partial_t \psi_h, \Delta_h \psi_h)_{L^2} \\ &= -2 \Re(\partial_t \psi_h, -2i \partial_t \psi_h)_{L^2} = -4 \Im(\partial_t \psi_h, \partial_t \psi_h)_{L^2} = 0, \end{aligned}$$

which implies (2.28b).

(ii) For $u_h, w_h \in \mathcal{V}^h$ and $\psi_h = \mathcal{E}_{B_h}(t, w_h) u_h$ we have $\partial_t \psi_h = -i \Theta_h \psi_h$ with $\Theta_h = \Delta_h^{-1}(|w_h|^2)$, hence

$$\partial_t \|\psi_h\|_{L^2}^2 = \partial_t (\psi_h, \psi_h)_{L^2} = 2 \Re(\partial_t \psi_h, \psi_h)_{L^2} = 2 \Im(\Theta_h \psi_h, \psi_h)_{L^2} = 0,$$

since Θ_h is real. This implies (2.29a).

On the other hand, \mathcal{E}_{B_h} does not conserve the H^1 -norm. To derive a bound we compute

$$\begin{aligned} \partial_t |\psi_h|_{H^1}^2 &= \partial_t (\nabla \psi_h, \nabla \psi_h)_{L^2} = 2 \Re(\nabla \partial_t \psi_h, \nabla \psi_h)_{L^2} = 2 \Re(-i (\nabla(\Theta_h \psi_h), \nabla \psi_h)_{L^2}) \\ &= 2 \Im(\Theta_h \nabla \psi_h, \nabla \psi_h)_{L^2} + 2 \Im(\psi_h \nabla \Theta_h, \nabla \psi_h)_{L^2} = 0 + 2 \Im(\psi_h \nabla \Theta_h, \nabla \psi_h)_{L^2}, \end{aligned}$$

and estimate

$$2 |\psi_h|_{H^1} \partial_t |\psi_h|_{H^1} = \partial_t |\psi_h|_{H^1}^2 \leq 2 |(\psi_h \nabla \Theta_h, \nabla \psi_h)_{L^2}| \leq 2 \|\psi_h \nabla \Theta_h\|_{L^2} |\psi_h|_{H^1}.$$

This implies (2.29b),

$$\partial_t |\psi_h|_{H^1} \leq \|\psi_h \nabla \Theta_h\|_{L^2} \quad \text{for } \psi_h = \mathcal{E}_{B_h}(t, w_h) u_h,$$

concluding the proof. \square

3. AUXILIARY RESULTS

This section contains a collection of useful theorems and bounds which will be used in the convergence theory in Section 4.

3.1. Interpolation bounds and inverse estimates

In our convergence analysis we will refer to the following standard interpolation and inverse estimates.

Theorem 3.1. *Suppose $1 < p < \infty$ and $m - d/p > 0$. Then, for $0 \leq s \leq m$ and $u \in W_p^m$,*

$$\|u - \mathcal{I}_h u\|_{W_p^s} \leq C h^{m-s} |u|_{W_p^m}, \quad (3.1)$$

where C depends on m and d .

Furthermore,

$$\|u - \mathcal{I}_h u\|_{L^\infty} \leq C h^{m-d/p} |u|_{W_p^m}, \quad (3.2)$$

where C depends on m and d .

This follows from our assumptions and [10, Theorem 4.4.20].

Theorem 3.2. *Suppose that the boundary of Ω is such that*

$$|\Delta^{-1}(u - \mathcal{P}_h u)|_{H^2} \leq C \|u - \mathcal{P}_h u\|_{L^2} \quad (3.3)$$

holds. Then

$$\|u - \mathcal{P}_h u\|_{L^2} \leq C h^m |u|_{H^m}.$$

The proof relies on a duality argument and can be found in [10, Theorem 5.4.8].

Theorem 3.3 (Inverse estimate). *Suppose that $0 < h < 1$. Then there exists C such that*

$$\|u_h\|_{H^1} \leq C h^{-1} \|u_h\|_{L^2}$$

for all $u_h \in \mathcal{V}^h$.

This follows from the remark of [10, Theorem 4.5.11].

3.2. Bounds involving Δ_h^{-1}

At first we note the H^1 -regularity property (see (2.23)),

$$\|u_h\|_{H^1} = \|\Delta_h^{-1} f\|_{H^1} = \|\mathcal{P}_h \Delta^{-1} f\|_{H^1} \leq C \|\Delta^{-1} f\|_{H^1} \leq C \|f\|_{H^{-1}}. \quad (3.4)$$

The following estimate will be useful:

Proposition 3.4. *For $f, g \in L^2$,*

$$\|f g\|_{H^{-1}} \leq C \|f\|_{L^2} \|g\|_{H^1}, \quad (3.5)$$

where C depends on d and on Ω .

Proof. We apply Cauchy-Schwarz and Hölder inequalities and the Sobolev embedding of H^1 in L^4 ,

$$\|f g\|_{H^{-1}} = \sup_{\|v\|_{H^1}=1} |(f g, v)_{L^2}| \leq \sup_{\|v\|_{H^1}=1} \|f\|_{L^2} \|g v\|_{L^2} \leq \sup_{\|v\|_{H^1}=1} \|f\|_{L^2} \|g\|_{L^4} \|v\|_{L^4} \leq C \|f\|_{L^2} \|g\|_{H^1},$$

completing the proof. \square

Proposition 3.5. For $a \in L^2$ and $b, c \in H_0^1$,

$$\|\Delta_h^{-1}(ab)c\|_{L^2} \leq C \|a\|_{L^2} \|b\|_{H^1} \|c\|_{H^1},$$

where C depends on d and on Ω .

Proof. We use Hölder's inequality, the Sobolev embedding of H^1 in L^4 , the estimate (3.4), and Proposition 3.4:

$$\begin{aligned} \|\Delta_h^{-1}(ab)c\|_{L^2} &\leq \|\Delta_h^{-1}(ab)\|_{L^4} \|c\|_{L^4} \leq C \|\Delta_h^{-1}(ab)\|_{H^1} \|c\|_{H^1} \\ &\leq C \|ab\|_{H^{-1}} \|c\|_{H^1} \leq C \|a\|_{L^2} \|b\|_{H^1} \|c\|_{H^1}, \end{aligned}$$

completing the proof. \square

Proposition 3.6. For $a, b, c \in H_0^1$,

$$\|(\nabla \Delta_h^{-1}(a, b))c\|_{L^2} \leq C \|a\|_{L^3} \|b\|_{L^3} \|c\|_{H^1} + Ch \|a\|_{L^6} \|b\|_{L^6} \|c\|_{H^1},$$

with a constant C depending on d and Ω .

Proof. We use Hölder's inequality, apply Theorem 3.1, and use the Sobolev embedding of H^1 in L^6 ,

$$\begin{aligned} \|(\nabla \Delta_h^{-1}(ab))c\|_{L^2} &\leq \|\nabla \Delta_h^{-1}(ab)\|_{L^3} \|c\|_{L^6} \\ &\leq \|\nabla(\Delta_h^{-1} - \Delta^{-1})(ab)\|_{L^3} \|c\|_{L^6} + \|\nabla \Delta^{-1}(ab)\|_{L^3} \|c\|_{L^6} \\ &\leq Ch |\Delta^{-1}(ab)|_{W_3^2} \|c\|_{L^6} + \|\Delta^{-1}(ab)\|_{W_3^1} \|c\|_{L^6} \\ &\leq Ch \|ab\|_{L^3} \|c\|_{L^6} + \|ab\|_{W_3^{-1}} \|c\|_{L^6} \\ &\leq Ch \|a\|_{L^6} \|b\|_{L^6} \|c\|_{H^1} + C \|ab\|_{W_3^{-1}} \|b\|_{H^1} \\ &\leq Ch \|a\|_{L^6} \|b\|_{L^6} \|c\|_{H^1} + C \|a\|_{L^3} \|b\|_{L^3} \|c\|_{H^1}, \end{aligned}$$

where the last inequality follows from a duality argument and the Hölder inequality, $\|ab\|_{W_3^{-1}} \leq \|a\|_{L^3} \|b\|_{L^3}$. \square

Corollary 3.7. For $a, b, c \in H_0^1$,

$$\|(\nabla \Delta_h^{-1}(ab))c\|_{L^2} \leq C(1+h) \|a\|_{H^1} \|b\|_{H^1} \|c\|_{H^1}. \quad (3.6)$$

Proof. This follows from Proposition 3.6 and the Sobolev embeddings of H^1 in L^3 and L^6 . \square

3.3. Conditional H^1 -stability of the evolution operator $\mathcal{E}_{B_h}(t, \cdot)$

Proposition 3.8. For $\phi, \xi \in \mathcal{V}^h$, the evolution operator $\mathcal{E}_{B_h}(t, \cdot)$ defined in (2.26b) satisfies

$$\|\mathcal{E}_{B_h}(t, \phi)\xi\|_{H^1} \leq e^{tC\|\phi\|_{H^1}^2} \|\xi\|_{H^1}, \quad (3.7)$$

with a constant C depending on d and Ω .

Proof. Let $\psi_h = \mathcal{E}_{B_h}(t, \phi)\xi$ and $\Theta_h = \Delta_h^{-1}(|\phi|^2) = \Delta_h^{-1}(\phi \cdot \bar{\phi})$. According to (2.29b),

$$\partial_t \|\psi_h\|_{H^1} = \partial_t |\psi_h|_{H^1} \leq \|\psi_h \nabla \Theta_h\|_{L^2}.$$

From Corollary 3.7 we obtain

$$\partial_t \|\psi_h\|_{H^1} = \|\psi_h \nabla \Theta_h\|_{L^2} \leq C(1+h) \|\phi\|_{H^1} \|\phi\|_{H^1} \|\psi_h\|_{H^1}$$

which entails (3.7) for $h < 1$. \square

3.4. H^m -regularity of the semi-discrete splitting solution

Here we show that an H^m -bound for the semi-discrete splitting solution $\mathcal{S}^n \psi_0$ defined in (2.7) depends linearly on the H^m -norm of the initial value ψ_0 times an exponential function depending on lower order Sobolev norms. Hence for bounded times $n\tau \leq T$, the H^m -norm of the semi-discrete splitting solution will not behave worse than the H^m -norm of the initial value.

Proposition 3.9. *Let $m \in \mathbb{N}$. If $\psi_0 \in H^m$ and*

$$\|\mathcal{S}^n \psi_0\|_{H^1} \leq M_1 \quad \text{for all } n \text{ with } n\tau \leq T,$$

then

$$\|\mathcal{S}^n \psi_0\|_{H^m} \leq e^{L_m n\tau} \|\psi_0\|_{H^m} \quad \text{for } n\tau \leq T, \quad m \geq 2, \quad (3.8)$$

where L_m depends on M_1 and on $\|\psi_0\|_{H^j}$ for all $j < m$. The specific dependence is indicated in the proof.

Proof. Since φ_A conserves the H^m -norm, we only consider the properties of the splitting operator φ_B , which is the solution of (see Sec. 2)

$$\begin{cases} \partial_\tau \psi = -i \Delta^{-1}(|u|^2) \psi, \\ \psi|_{t=0} = u. \end{cases} \quad (3.9)$$

The basic idea is to bound the right-hand side of (3.9) in the corresponding H^m -norm, using the following estimates. By the Hölder inequality and the Sobolev embeddings of H^2 in L^∞ and H^1 in L^4 , we have

$$\|uv\|_{H^m} \leq C \sum_{j=2}^m \|u\|_{H^j} \|v\|_{H^{m-j+2}}, \quad m \geq 2.$$

We further use the bound

$$\begin{aligned} \|\Delta^{-1}(|u|^2)\|_{H^2} &\leq C \| |u|^2 \|_{L^2} \leq C \|u\|_{H^1}^2, \\ \|\Delta^{-1}(|u|^2)\|_{H^m} &\leq C \| |u|^2 \|_{H^{m-2}} \leq C \|u\|_{H^1}^2, \quad l = \max\{2, m-2\}, \quad \text{for } m \geq 3, \end{aligned}$$

and obtain

$$\|\Delta^{-1}(|u|^2)v\|_{H^2} \leq C \|u\|_{H^1}^2 \|v\|_{H^2}, \quad (3.10a)$$

$$\|\Delta^{-1}(|u|^2)v\|_{H^m} \leq C \sum_{j=2}^{m-2} \|u\|_{H^{m-j}}^2 \|v\|_{H^j} + C \|u\|_{H^2}^2 \|v\|_{H^{m-1}} + C \|u\|_{H^1}^2 \|v\|_{H^m} \quad \text{for } m \geq 3. \quad (3.10b)$$

For the proof of (3.8), we first proceed along the lines of the arguments from [29], where the result was shown for $m = 2$ and then extend the result for $m \in \{3, 4, 5\}$. For higher values of m the proof works analogously but becomes technically more and more involved.

- $m = 2$: From (3.9) we obtain an integral inequality in the H^2 -norm using the bound (3.10a),

$$\|\psi(\tau)\|_{H^2} \leq \|u\|_{H^2} + \int_0^\tau C M_1^2 \|\psi(\sigma)\|_{H^2} d\sigma,$$

where $\|u\|_{H^1} \leq M_1$.

By a Gronwall argument it follows that

$$\|\psi(\tau)\|_{H^2} \leq e^{\tau C M_1^2} \|u\|_{H^2},$$

and thus $\|\mathcal{S}\psi_0\|_{H^2} \leq e^{\tau C M_1^2} \|\psi_0\|_{H^2}$. Iterative application yields

$$\|\mathcal{S}^n \psi_0\|_{H^2} \leq e^{n\tau C M_1^2} \|\psi_0\|_{H^2} \quad (3.11)$$

and the constant L_2 reads $L_2 = C M_1^2$.

- $m = 3$: Again, we bound the right-hand side of (3.9). By (3.10b), we obtain for $m = 3$,

$$\|\Delta^{-1}(|u|^2)\psi(\tau)\|_{H^3} \leq C \|u\|_{H^1}^2 \|\psi(\tau)\|_{H^3} + C \|u\|_{H^2}^2 \|\psi(\tau)\|_{H^2}.$$

Hence,

$$\|\psi(\tau)\|_{H^3} \leq \|u\|_{H^3} + \int_0^\tau (C \|u\|_{H^1}^2 \|\psi(\sigma)\|_{H^3} + C \|u\|_{H^2}^2 \|\psi(\sigma)\|_{H^2}) d\sigma,$$

and by a Gronwall argument it follows that

$$\|\psi(\tau)\|_{H^3} \leq e^{\tau C M_1^2} (\|u\|_{H^3} + \tau \sup_{0 \leq \sigma \leq \tau} C \|u\|_{H^2}^2 \|\psi(\sigma)\|_{H^2}).$$

Setting $\psi = \mathcal{S}^n \psi_0$, $u = \mathcal{S}^{n-1} \psi_0$, and inserting the bound (3.11) for the H^2 -norms, we conclude that

$$\begin{aligned} \|\mathcal{S}^n \psi_0\|_{H^3} &\leq e^{\tau C M_1^2} \|\mathcal{S}^{n-1} \psi_0\|_{H^3} + \tau C e^{\tau C M_1^2} e^{2(n-1)\tau C M_1^2} \|\psi_0\|_{H^2}^2 e^{n\tau C M_1^2} \|\psi_0\|_{H^2} \\ &\leq e^{\tau C M_1^2} \|\mathcal{S}^{n-1} \psi_0\|_{H^3} + \tau C e^{3n\tau C M_1^2} \|\psi_0\|_{H^2}^3 \\ &\leq e^{n\tau C M_1^2} \|\psi_0\|_{H^3} + \sum_{i=0}^{n-1} \tau C e^{3n\tau C M_1^2} \|\psi_0\|_{H^2}^3 \\ &\leq e^{n\tau C M_1^2} \|\psi_0\|_{H^3} + n\tau C e^{3n\tau C M_1^2} \|\psi_0\|_{H^2}^2 \|\psi_0\|_{H^3} \\ &\leq e^{3n\tau C M_1^2} (1 + n\tau C \|\psi_0\|_{H^2}^2) \|\psi_0\|_{H^3} \\ &\leq e^{3n\tau C M_1^2} e^{n\tau C \|\psi_0\|_{H^2}^2} \|\psi_0\|_{H^3} \\ &\leq e^{n\tau C (3M_1^2 + \|\psi_0\|_{H^2}^2)} \|\psi_0\|_{H^3}. \end{aligned}$$

- $m = 4$: From (3.10b) and (3.9) we obtain

$$\|\psi(\tau)\|_{H^4} \leq \|u\|_{H^4} + \int_0^\tau (C \|u\|_{H^1}^2 \|\psi(\sigma)\|_{H^4} + C \|u\|_{H^2}^2 \|\psi(\sigma)\|_{H^3} + C \|u\|_{H^2}^2 \|\psi(\sigma)\|_{H^2}) d\sigma,$$

hence

$$\|\psi(\tau)\|_{H^4} \leq e^{\tau C M_1^2} \left(\|u\|_{H^4} + \tau C \|u\|_{H^2}^2 \sup_{0 \leq \sigma \leq \tau} (\|\psi(\sigma)\|_{H^3} + \|\psi(\sigma)\|_{H^2}) \right).$$

Setting $\psi = \mathcal{S}^n \psi_0$ and $u = \mathcal{S}^{n-1} \psi_0$ and following the argument for $m = 3$, we conclude that

$$\begin{aligned}
\|\mathcal{S}^n \psi_0\|_{H^4} &\leq e^{\tau C M_1^2} \|\mathcal{S}^{n-1} \psi_0\|_{H^4} \\
&\quad + \tau C e^{2n\tau C M_1^2} \|\psi_0\|_{H^2}^2 (e^{n\tau C (3M_1^2 + \|\psi_0\|_{H^2}^2)} \|\psi_0\|_{H^3} + e^{n\tau C M_1^2} \|\psi_0\|_{H^2}) \\
&\leq e^{\tau C M_1^2} \|\mathcal{S}^{n-1} \psi_0\|_{H^4} + \tau C e^{n\tau C (5M_1^2 + \|\psi_0\|_{H^2}^2)} \|\psi_0\|_{H^2}^2 \|\psi_0\|_{H^3} \\
&\leq e^{n\tau C M_1^2} \|\psi_0\|_{H^4} + n\tau C e^{n\tau C (5M_1^2 + \|\psi_0\|_{H^2}^2)} \|\psi_0\|_{H^2}^2 \|\psi_0\|_{H^4} \\
&\leq e^{n\tau C (5M_1^2 + \|\psi_0\|_{H^2}^2)} (1 + n\tau C \|\psi_0\|_{H^2}^2) \|\psi_0\|_{H^4} \\
&\leq e^{n\tau C (5M_1^2 + 2\|\psi_0\|_{H^2}^2)} \|\psi_0\|_{H^4}.
\end{aligned}$$

- $m = 5$: In a similar way as before we obtain

$$\|\psi(\tau)\|_{H^5} \leq \|u\|_{H^5} + C \int_0^\tau \|u\|_{H^1}^2 \|\psi(\sigma)\|_{H^5} + \|u\|_{H^2}^2 (\|\psi(\sigma)\|_{H^4} + \|\psi(\sigma)\|_{H^3}) + \|u\|_{H^3}^2 \|\psi(\sigma)\|_{H^2} d\sigma$$

and thus

$$\begin{aligned}
\|\mathcal{S}^n \psi_0\|_{H^5} &\leq e^{\tau C M_1^2} \|\mathcal{S}^{n-1} \psi_0\|_{H^5} + \tau C e^{2n\tau C M_1^2} \|\psi_0\|_{H^2}^2 (e^{n\tau C (5M_1^2 + 2\|\psi_0\|_{H^2}^2)} \|\psi_0\|_{H^4} \\
&\quad + e^{n\tau C (3M_1^2 + \|\psi_0\|_{H^2}^2)} \|\psi_0\|_{H^3}) + \tau C e^{2n\tau C (3M_1^2 + \|\psi_0\|_{H^2}^2)} \|\psi_0\|_{H^2}^2 e^{n\tau C M_1^2} \|\psi_0\|_{H^2} \\
&\leq e^{\tau C M_1^2} \|\mathcal{S}^{n-1} \psi_0\|_{H^5} + \tau C e^{n\tau C (7M_1^2 + 2\|\psi_0\|_{H^2}^2)} \|\psi_0\|_{H^2} \|\psi_0\|_{H^3} \|\psi_0\|_{H^4} \\
&\leq e^{n\tau C (7M_1^2 + 2\|\psi_0\|_{H^2}^2)} (1 + n\tau C \|\psi_0\|_{H^3}^2) \|\psi_0\|_{H^5} \\
&\leq e^{n\tau C (7M_1^2 + 2\|\psi_0\|_{H^2}^2 + \|\psi_0\|_{H^3}^2)} \|\psi_0\|_{H^5}.
\end{aligned}$$

□

4. CONVERGENCE ANALYSIS

4.1. Outline of the convergence proof

In order to study the global error $\psi_n - \psi(t_n)$ we separate the terms associated with space and time discretization, respectively. With $\psi_n = \mathcal{S}_h^n \mathcal{I}_h \psi_0$ and $\psi(t_n) = \varphi_{\text{SP}}(t_n, \psi_0)$, we write

$$\psi_n - \psi(t_n) = (\mathcal{S}_h^n \mathcal{I}_h \psi_0 - \mathcal{S}^n \psi_0) + (\mathcal{S}^n \psi_0 - \varphi_{\text{SP}}(t_n, \psi_0)). \quad (4.1)$$

The first term represents the error attributable to the space discretization and the second term is the splitting error at the semi-discrete level.

- The first term in (4.1) is expanded into a telescoping sum in the following way:

$$\begin{aligned}
\mathcal{S}_h^n \mathcal{I}_h \psi_0 - \mathcal{S}^n \psi_0 &= \mathcal{S}_h^n (\mathcal{I}_h - \mathcal{P}_h) \psi_0 + (\mathcal{S}_h^n \mathcal{P}_h - \mathcal{P}_h \mathcal{S}^n) \psi_0 + (\mathcal{P}_h - \text{Id}) \mathcal{S}^n \psi_0 \\
&= \mathcal{S}_h^n (\mathcal{I}_h - \mathcal{P}_h) \psi_0 + \sum_{j=1}^n \mathcal{S}_h^{n-j} (\mathcal{S}_h \mathcal{P}_h - \mathcal{P}_h \mathcal{S}) \mathcal{S}^{j-1} \psi_0 + (\mathcal{P}_h - \text{Id}) \mathcal{S}^n \psi_0. \quad (4.2a)
\end{aligned}$$

We will combine a stability argument for the fully discrete splitting operator \mathcal{S}_h (see Sec. 4.3) with the approximation properties of the finite-element interpolants (see Theorem 3.1) and the Rayleigh-Ritz-projection \mathcal{P}_h (see Theorem 3.2). What remains to be estimated are terms of the form $(\mathcal{S}_h \mathcal{P}_h - \mathcal{P}_h \mathcal{S})u$, which will be worked out in Sec. 4.4.

- The second term in (4.1) can similarly be recast as

$$\mathcal{S}^n \psi_0 - \varphi_{\text{SP}}(t_n, \psi_0) = \sum_{j=1}^n \mathcal{S}^{n-j} (\mathcal{S} \varphi_{\text{SP}}(t_{j-1}, \psi_0) - \varphi_{\text{SP}}(\tau, \varphi_{\text{SP}}(t_{j-1}, \psi_0))). \quad (4.2b)$$

Here we will apply a standard argument for estimating the splitting error at the semi-discrete level combining the stability of the splitting operator \mathcal{S} (see Sec. 4.3) with an estimate for the local splitting error $\mathcal{S}(\tau, \psi) - \varphi_{\text{SP}}(\tau, \psi)$ (see Theorem 4.2 or [29]).

4.2. Global error bound

We start by separating the effects of space and time discretization, see (4.2a) and (4.2b) and consider bounds in the H^1 - and L^2 -norm.

By a Lady Windermere argument and the stability estimates from Sec. 4.3, the expression $\|\mathcal{S}_h^n \mathcal{I}_h \psi_0 - \mathcal{S}^n \psi_0\|$ in (4.2a) can be expressed by an h^s -bound in L^2 and an h^{s-1} -bound in H^1 , as shown in the following Theorem 4.1. The norms $\|\mathcal{S}^n \psi_0 - \varphi_{\text{SP}}(t_n, \psi_0)\|$ have already been studied in [29] and are summarized in Theorem 4.2 below. In Theorem 4.3, we combine these results and obtain global error bounds depending on the regularity of the initial values.

In this convergence theory we make use of several stability estimates and consistency results which are collected in Sec. 4.3–4.5 below.

Theorem 4.1. *Let $\psi_0 \in H^\ell$ for $\ell \geq 4$, $\max_{1 \leq m \leq n} \|\mathcal{S}^m \psi_0\|_{H^s} \leq M_s$, and $\max_{1 \leq m \leq n} (\|\mathcal{S}_h^m \mathcal{P}_h \mathcal{S}^{j-m} u\|_{H^1}) \leq a_{\mathcal{S}_h}$. Then for $s = \min\{p+1, \ell\}$, the L^2 and H^1 bounds of the semi-discrete error $\mathcal{S}_h^n \mathcal{I}_h \psi_0 - \mathcal{S}^n \psi_0$ can be bounded in L^2 and H^1 :*

$$\begin{aligned} \|\mathcal{S}_h^n \mathcal{I}_h \psi_0 - \mathcal{S}^n \psi_0\|_{L^2} &\leq C t_n h^s (1 + \frac{1}{\tau})^\beta, \\ \|\mathcal{S}_h^n \mathcal{I}_h \psi_0 - \mathcal{S}^n \psi_0\|_{H^1} &\leq C t_n h^{s-1} (1 + \frac{1}{\tau})^\beta, \end{aligned}$$

where $\beta = \max\{0, \text{sgn}(p+3-\ell)\}$ and C depends on d , Ω , t_n , $a_{\mathcal{S}_h}$ and $M_{s+2(1-\beta)}$.

Proof.

- *L^2 -bound.* We proceed as indicated at the beginning of Sec. 4.1 and use the stability properties (4.7) of the splitting operator \mathcal{S}_h (see Proposition 4.4 in Sec. 4.3):

$$\begin{aligned} \|\mathcal{S}_h^n \mathcal{I}_h \psi_0 - \mathcal{S}^n \psi_0\|_{L^2} &\leq \|\mathcal{S}_h^n (\text{Id} - \mathcal{I}_h) \psi_0\|_{L^2} + \|\mathcal{S}_h^n (\text{Id} - \mathcal{P}_h) \psi_0\|_{L^2} \\ &\quad + \sum_{j=1}^n \|\mathcal{S}_h^{n-j} \mathcal{S}_h \mathcal{P}_h \mathcal{S}^{j-1} \psi_0 - \mathcal{S}_h^{n-j} \mathcal{P}_h \mathcal{S} \mathcal{S}^{j-1} \psi_0\|_{L^2} + \|(\text{Id} - \mathcal{P}_h) \mathcal{S}^n \psi_0\|_{L^2} \\ &\leq e^{C t_n a_{\mathcal{S}_h}^2} (\|(\text{Id} - \mathcal{I}_h) \psi_0\|_{L^2} + \|(\text{Id} - \mathcal{P}_h) \psi_0\|_{L^2}) \\ &\quad + \sum_{j=1}^n e^{C (t_n - t_j) a_{\mathcal{S}_h}^2} \|\mathcal{S}_h \mathcal{P}_h \mathcal{S}^{j-1} \psi_0 - \mathcal{P}_h \mathcal{S} \mathcal{S}^{j-1} \psi_0\|_{L^2} + \|(\text{Id} - \mathcal{P}_h) \mathcal{S}^n \psi_0\|_{L^2} \\ &\leq e^{C t_n a_{\mathcal{S}_h}^2} (\|(\text{Id} - \mathcal{I}_h) \psi_0\|_{L^2} + \|(\text{Id} - \mathcal{P}_h) \psi_0\|_{L^2}) \end{aligned} \quad (4.3a)$$

$$+ n e^{C t_n a_{\mathcal{S}_h}^2} \max_{1 \leq j \leq n} \|\mathcal{S}_h \mathcal{P}_h \mathcal{S}^{j-1} \psi_0 - \mathcal{P}_h \mathcal{S} \mathcal{S}^{j-1} \psi_0\|_{L^2} + \|(\text{Id} - \mathcal{P}_h) \mathcal{S}^n \psi_0\|_{L^2}. \quad (4.3b)$$

By the regularity result for the splitting operator \mathcal{S}_h , see Lemma 4.9 in Sec. 4.5, we can ensure the existence of the constant $a_{\mathcal{S}_h}$.

The expressions in (4.3a) can be bounded using Theorems 3.1 and 3.2,

$$\begin{aligned}\|(\text{Id} - \mathcal{P}_h) u\|_{L^2} &\leq C h^s \|u\|_{H^s}, \\ \|(\text{Id} - \mathcal{I}_h) u\|_{L^2} &\leq C h^s \|u\|_{H^s},\end{aligned}$$

and by the bound (3.8) from Proposition 3.9 we obtain

$$\|\mathcal{S}^n \psi_0\|_{H^s} \leq e^{L_s t_n} \|\psi_0\|_{H^s}.$$

It remains to bound $\|\mathcal{S}_h \mathcal{P}_h \mathcal{S}^{j-1} \psi_0 - \mathcal{P}_h \mathcal{S} \mathcal{S}^{j-1} \psi_0\|_{L^2}$. By Theorem 4.8 from Sec. 4.4, it follows that

$$\|\mathcal{S}_h(\tau, \mathcal{P}_h u) - \mathcal{P}_h \mathcal{S}(\tau, u)\|_{L^2} \leq C \tau (1 + \frac{1}{\tau})^\beta h^s,$$

for $s = \min\{l, p+1\}$, $\beta = \max\{0, \text{sgn}(p+3-l)\}$, where C depends on d , Ω , L_s , and $M_{s+2(1-\beta)}$. Altogether, we obtain

$$\begin{aligned}\|\mathcal{S}_h^n \mathcal{I}_h \psi_0 - \mathcal{S}^n \psi_0\|_{L^2} &\leq e^{C t_n a_{\mathcal{S}_h}^2} h^s \|\psi_0\|_{H^s} + e^{t_n L_s} h^s \|\psi_0\|_{H^s} + n e^{C t_n a_{\mathcal{S}_h}^2} C \tau (1 + \frac{1}{\tau})^\beta h^s \\ &\leq C h^s (e^{C t_n a_{\mathcal{S}_h}^2} \|\psi_0\|_{H^s} + t_n (1 + \frac{1}{\tau})^\beta e^{C t_n a_{\mathcal{S}_h}^2}) \\ &\leq C t_n (1 + \frac{1}{\tau})^\beta h^s,\end{aligned}$$

which concludes the proof for the L^2 bound.

- H^1 -bound. Analogously as for the L^2 -bound, we use Theorems 3.1 and 3.2 and Proposition 3.9 and Theorem 4.8. Hence we obtain

$$\begin{aligned}\|\mathcal{S}_h^n \mathcal{I}_h \psi_0 - \mathcal{S}^n \psi_0\|_{H^1} &\leq \|\mathcal{S}_h^n \mathcal{I}_h \psi_0 - \mathcal{S}_h^n \psi_0\|_{H^1} + \|\mathcal{S}_h^n \psi_0 - \mathcal{S}_h^n \mathcal{P}_h \psi_0\|_{H^1} \\ &\quad + \sum_{j=1}^n \|\mathcal{S}_h^{n-j} \mathcal{S}_h \mathcal{P}_h \mathcal{S}^{j-1} \psi_0 - \mathcal{S}_h^{n-j} \mathcal{P}_h \mathcal{S} \mathcal{S}^{j-1} \psi_0\|_{H^1} + \|\mathcal{P}_h \mathcal{S}^n \psi_0 - \mathcal{S}^n \psi_0\|_{H^1} \\ &\leq e^{C t_n a_{\mathcal{S}_h}^2} (\|\mathcal{I}_h \psi_0 - \psi_0\|_{H^1} + \|\psi_0 - \mathcal{P}_h \psi_0\|_{H^1}) + \|\mathcal{P}_h \mathcal{S}^n \psi_0 - \mathcal{S}^n \psi_0\|_{H^1} \\ &\quad + n e^{C t_n a_{\mathcal{S}_h}^2} \max_{1 \leq j \leq n} \|\mathcal{S}_h \mathcal{P}_h \mathcal{S}^{j-1} \psi_0 - \mathcal{P}_h \mathcal{S} \mathcal{S}^{j-1} \psi_0\|_{H^1} \\ &\leq e^{C t_n a_{\mathcal{S}_h}^2} h^{s-1} \|\psi_0\|_{H^s} + e^{t_n L_s} h^{s-1} \|\psi_0\|_{H^s} + n e^{C t_n a_{\mathcal{S}_h}^2} C \tau (1 + \frac{1}{\tau})^\beta h^{s-1} \\ &\leq C h^{s-1} (e^{C t_n a_{\mathcal{S}_h}^2} \|\psi_0\|_{H^s} + t_n (1 + \frac{1}{\tau})^\beta e^{C t_n a_{\mathcal{S}_h}^2}) \\ &\leq C t_n (1 + \frac{1}{\tau})^\beta h^{s-1},\end{aligned}$$

where the constant C depends on $a_{\mathcal{S}_h}$, t_n , and $\|\psi_0\|_{H^s}$. □

The following theorem summarizes the semidiscrete error in time:

Theorem 4.2. *Suppose that the exact solution $\psi(t_n)$ to the Schrödinger-Poisson equation (2.2b) is in H^2 for $0 \leq t_n \leq T$. Then, the semi-discrete numerical solution $\mathcal{S}^n \psi_0$ given by the Strang splitting scheme (2.7) with stepsize τ satisfies*

$$\|\mathcal{S}^n \psi_0 - \psi(t_n)\|_{L^2} \leq C_1 \tau^2, \tag{4.5a}$$

$$\|\mathcal{S}^n \psi_0 - \psi(t_n)\|_{H^1} \leq C_2 \tau, \tag{4.5b}$$

where both constants C_1, C_2 depend on T, Ω , and on the H^2 -norm of ψ .

Proof. The detailed proof can be found in [29] with the restriction that C_1 and C_2 depend on the H^3 - respectively the H^4 -norm of ψ . For the improved bounds (4.5) in $H^2(\mathbb{R}^d)$ we refer to [26] and for full details on the computation of the commutators see [25]. In our case, the domain Ω is finite, but the analogous Sobolev embeddings hold also in this case, see [3].

For the dominant terms we now show the sharp estimates directly. For the bound (4.5b), the dependence on the H^3 -norm is indicated in [29] to arise from a bound of

$$\|\Delta^{-1}(\psi \overline{\Delta\psi})\psi\|_{H^1}.$$

Since all other terms are already bounded in terms of $\|\psi\|_{H^2}$, it suffices to estimate this term likewise. Using Proposition 3.4 we obtain

$$\begin{aligned} \|\Delta^{-1}(\psi \overline{\Delta\psi})\psi\|_{H^1} &\leq \|\nabla\Delta^{-1}(\psi \overline{\Delta\psi})\psi\|_{L^2} + \|\Delta^{-1}(\psi \overline{\Delta\psi})\nabla\psi\|_{L^2} \\ &\leq \|\Delta^{-1}(\psi \overline{\Delta\psi})\|_{H^1} \|\psi\|_{L^\infty} + C \|\Delta^{-1}(\psi \overline{\Delta\psi})\|_{H^1} \|\nabla\psi\|_{H^1} \\ &\leq C \|\psi \overline{\Delta\psi}\|_{H^{-1}} \|\psi\|_{H^2} \leq C \|\psi\|_{H^1} \|\overline{\Delta\psi}\|_{L^2} \|\psi\|_{H^2} \\ &\leq C \|\psi\|_{H^2}^2 \|\psi\|_{H^1}. \end{aligned}$$

For the bound (4.5a) in terms of $\|\psi\|_{H^2}$ we refer to the bounds given in [29] and the improved bounds from [26]. For full details on the computation of the commutators involved, see [25].

However, the critical term in the commutator bound is identified as

$$\|4i\Delta^{-1}(\psi \Delta^2\overline{\psi})\psi\|_{L^2},$$

for which we will show in detail that it can be bounded in terms of the H^2 -norm. Using a duality argument in L^2 and integration by parts we obtain

$$\begin{aligned} \|\Delta^{-1}(\psi \Delta^2\overline{\psi})\psi\|_{L^2} &\leq C \|\Delta^{-1}(\psi \Delta^2\overline{\psi})\|_{L^2} \|\psi\|_{H^2} \leq C \sup_{\|\phi\|_{L^2}=1} (\Delta^{-1}(\psi \Delta^2\overline{\psi}), \phi)_{L^2} \|\psi\|_{H^2} \\ &= \sup_{\|\phi\|_{L^2}=1} (\psi \Delta^2\overline{\psi}, \Delta^{-1}\phi)_{L^2} \|\psi\|_{H^2} \leq C \sup_{\|\phi\|_{L^2}=1} (\Delta^2\overline{\psi}, \overline{\psi} \Delta^{-1}\phi)_{L^2} \cdot \|\psi\|_{H^2} \\ &= C \sup_{\|\phi\|_{L^2}=1} (\Delta\overline{\psi}, \Delta(\overline{\psi} \Delta^{-1}\phi))_{L^2} \cdot \|\psi\|_{H^2} \\ &\leq C \sup_{\|\phi\|_{L^2}=1} \int_{\Omega} (\Delta\overline{\psi})((\Delta\psi) \Delta^{-1}(\overline{\phi}) + (\nabla\psi) \cdot (\nabla\Delta^{-1}(\overline{\phi})) + \psi \overline{\phi}) \, dx \cdot \|\psi\|_{H^2} \\ &\leq C \sup_{\|\phi\|_{L^2}=1} (\|\Delta\psi\|_{L^2} \|\Delta\psi\|_{L^2} \|\Delta^{-1}(\phi)\|_{L^\infty} + \|\Delta\psi\|_{L^2} \|\nabla\psi\|_{L^4} \|\nabla\Delta^{-1}(\phi)\|_{L^4} \\ &\quad + \|\Delta\psi\|_{L^2} \|\psi\|_{L^\infty} \|\phi\|_{L^2}) \cdot \|\psi\|_{H^2} \\ &\leq C \sup_{\|\phi\|_{L^2}=1} (\|\psi\|_{H^2} \|\psi\|_{H^2} \|\Delta^{-1}(\phi)\|_{H^2} + \|\psi\|_{H^2} \|\nabla\psi\|_{H^1} \|\Delta^{-1}(\phi)\|_{H^2} \\ &\quad + \|\psi\|_{H^2} \|\psi\|_{H^2} \|\phi\|_{L^2}) \cdot \|\psi\|_{H^2} \\ &\leq C \|\psi\|_{H^2}^3, \end{aligned}$$

concluding the proof. \square

Combining Theorems 4.1 and 4.2, we obtain the following global error bound for the full discretization:

Theorem 4.3. *Suppose that $\psi \in H^\ell$, $\ell \geq 4$ and that Ω is such that (3.3) holds and has Lipschitz boundary or satisfies the cone property. Consider the fully discretized method from (2.27a) based on the Strang splitting*

scheme and conforming finite elements of degree p , then

$$\begin{aligned}\|\psi_n - \psi(t_n)\|_{L^2} &\leq C t_n (\tau^2 + h^s (1 + \frac{1}{\tau})^\beta), \\ \|\psi_n - \psi(t_n)\|_{H^1} &\leq C t_n (\tau + h^{s-1} (1 + \frac{1}{\tau})^\beta),\end{aligned}\tag{4.6}$$

where $s = \min\{\ell, p+1\}$ and $\beta = \max\{0, \text{sgn}(p+3-\ell)\}$. Here, C depends on Ω , d , the H^4 - and the $H^{s+2(1-\beta)}$ -norms of ψ .

The proof of Theorem 4.3 is based on the combination of Theorem 4.1 for the contribution $h^s(1 + \frac{1}{\tau})^\beta$ and on Theorem 4.2 for the contribution of τ^2 .

Conclusions. From Theorem 4.3, we can deduce the following convergence properties:

- For an initial value $\psi_0 \in H^{p+3}$, we obtain the classical convergence order in τ and h ,

$$\|\psi_n - \psi(t_n)\|_{L^2} \leq C t_n (\tau^2 + h^{p+1}), \quad \|\psi_n - \psi(t_n)\|_{H^1} \leq C t_n (\tau + h^p).$$

- For an initial value $\psi_0 \in H^\ell$, $\ell < p+3$ and fixed time stepsize τ , we obtain convergence of order $\mathcal{O}(h^{s-1})$ respectively $\mathcal{O}(h^s)$ in space,

$$\|\psi_n - \psi(t_n)\|_{L^2} \leq C t_n h^s, \quad \|\psi_n - \psi(t_n)\|_{H^1} \leq C t_n h^{s-1},$$

where $s = \min\{\ell, p+1\}$. However, the convergence in time might be of reduced order.

4.3. Stability properties of the splitting operators

To reduce the analysis of the global error to the study of the splitting error in a single time step, the following stability estimates for the splitting operators \mathcal{S} and \mathcal{S}_h are required. Since, analogously as in [29], the L^2 - and H^1 -bound depend on the H^1 -norms of the numerical solution, we first need a stability and convergence result in H^1 to show the H^1 -boundedness of the numerical solution. We list L^2 - and H^1 -bounds together and verify the L^2 -bounds in hindsight.

Proposition 4.4. *The fully discretized splitting operator \mathcal{S}_h defined in (2.27a) enjoys H^1 -stability and H^1 -conditional L^2 -stability,*

$$\|\mathcal{S}_h(\tau, \tilde{u}) - \mathcal{S}_h(\tau, u)\|_{L^2} \leq e^{C\tau a_{\mathcal{S}_h}^2} \|\tilde{u} - u\|_{L^2}, \tag{4.7a}$$

$$\|\mathcal{S}_h(\tau, \tilde{u}) - \mathcal{S}_h(\tau, u)\|_{H^1} \leq e^{C\tau a_{\mathcal{S}_h}^2} \|\tilde{u} - u\|_{H^1}, \tag{4.7b}$$

for $u, \tilde{u} \in \mathcal{V}^h$, with $a_{\mathcal{S}_h} = \max\{\|u\|_{H^1}, \|\tilde{u}\|_{H^1}\}$, and C depending on h , d , and Ω .

Proposition 4.5. *The semi-discrete splitting operator \mathcal{S} defined in (2.7a) enjoys H^1 -stability and H^1 -conditional L^2 -stability,*

$$\|\mathcal{S}(\tau, \tilde{u}) - \mathcal{S}(\tau, u)\|_{L^2} \leq e^{C\tau a_{\mathcal{S}}^2} \|\tilde{u} - u\|_{L^2},$$

$$\|\mathcal{S}(\tau, \tilde{u}) - \mathcal{S}(\tau, u)\|_{H^1} \leq e^{C\tau a_{\mathcal{S}}^2} \|\tilde{u} - u\|_{H^1},$$

for $u, \tilde{u} \in H_0^1$, with $a_{\mathcal{S}} = \max\{\|u\|_{H^1}, \|\tilde{u}\|_{H^1}\}$, and C depending on d and Ω .

Proof of L^2 -stability in Proposition 4.4. We aim for finding an estimate of $\mathcal{S}_h(\tau, \tilde{u}) - \mathcal{S}_h(\tau, u)$ for two functions $u, \tilde{u} \in \mathcal{V}^h$.

- We combine the unitarity of the operators φ_{A_h} and φ_{B_h} (see Proposition 2.4, (2.28a) and (2.29a)) with the linearity of φ_{A_h} and the definition of $\varphi_{B_h}(\tau, u) = \mathcal{E}_{B_h}(\tau, u)u$ with the linear operator $\mathcal{E}_{B_h}(\tau, \cdot)$ from (2.26b). With the abbreviations $w_h = \varphi_{A_h}(\frac{1}{2}\tau)u$, $\tilde{w}_h = \varphi_{A_h}(\frac{1}{2}\tau)\tilde{u}$ we obtain

$$\begin{aligned}
\|\mathcal{S}_h(\tau, \tilde{u}) - \mathcal{S}_h(\tau, u)\|_{L^2} &= \|\varphi_{A_h}(\frac{1}{2}\tau)(\varphi_{B_h}(\tau, \tilde{w}_h) - \varphi_{B_h}(\tau, w_h))\|_{L^2} \\
&= \|\mathcal{E}_{B_h}(\tau, \tilde{w}_h)\tilde{w}_h - \mathcal{E}_{B_h}(\tau, w_h)w_h\|_{L^2} \\
&\leq \|\mathcal{E}_{B_h}(\tau, \tilde{w}_h)(\tilde{w}_h - w_h)\|_{L^2} + \|\mathcal{E}_{B_h}(\tau, \tilde{w}_h)w_h - \mathcal{E}_{B_h}(\tau, w_h)w_h\|_{L^2} \\
&= \|\tilde{w}_h - w_h\|_{L^2} + \|\mathcal{E}_{B_h}(\tau, \tilde{w}_h)w_h - \varphi_{B_h}(\tau, w_h)\|_{L^2} \\
&= \|\tilde{u} - u\|_{L^2} + \|\mathcal{E}_{B_h}(\tau, \tilde{w}_h)w_h - \varphi_{B_h}(\tau, w_h)\|_{L^2}.
\end{aligned}$$

To estimate the last term we use the variation-of-constant representation (A.1),

$$\begin{aligned}
&\|\mathcal{E}_{B_h}(\tau, \tilde{w}_h)w_h - \varphi_{B_h}(\tau, w_h)\|_{L^2} \\
&\leq \int_0^\tau \|\mathcal{E}_{B_h}(\tau - \sigma, \tilde{w}_h)(\widehat{B}_h(\tilde{w}_h) - \widehat{B}_h(w_h))\mathcal{E}_{B_h}(\sigma, w_h)w_h\|_{L^2} d\sigma \\
&\leq \tau \sup_{0 \leq \sigma \leq \tau} \|(\widehat{B}_h(\tilde{w}_h) - \widehat{B}_h(w_h))\mathcal{E}_{B_h}(\sigma, w_h)w_h\|_{L^2}. \tag{4.9}
\end{aligned}$$

- To find an estimate for the right-hand side in (4.9) we denote $z_h = \widehat{B}_h(w_h)$, $\tilde{z}_h = \widehat{B}_h(\tilde{w}_h)$, and consider the Galerkin equations

$$\begin{aligned}
(\nabla z_h, \nabla v_h)_{L^2} &= -(|w_h|^2, v_h)_{L^2} \quad \text{for all } v_h \in \mathcal{V}^h, \\
(\nabla \tilde{z}_h, \nabla v_h)_{L^2} &= -(|\tilde{w}_h|^2, v_h)_{L^2} \quad \text{for all } v_h \in \mathcal{V}^h.
\end{aligned}$$

The difference

$$(\nabla(\tilde{z}_h - z_h), \nabla v_h)_{L^2} = -(|\tilde{w}_h|^2 - |w_h|^2, v_h)_{L^2} \quad \text{for all } v_h \in \mathcal{V}^h,$$

is again a discrete Poisson problem with solution

$$\tilde{z}_h - z_h = \Delta_h^{-1}(|\tilde{w}_h|^2 - |w_h|^2).$$

With this observation we obtain for (4.9):

$$\begin{aligned}
&\tau \sup_{0 \leq \sigma \leq \tau} \|(\widehat{B}_h(\tilde{w}_h) - \widehat{B}_h(w_h))\mathcal{E}_{B_h}(\sigma, w_h)w_h\|_{L^2} \\
&= \tau \sup_{0 \leq \sigma \leq \tau} \|\Delta_h^{-1}(|\tilde{w}_h|^2 - |w_h|^2)\mathcal{E}_{B_h}(\sigma, w_h)w_h\|_{L^2} \\
&\leq \tau \sup_{0 \leq \sigma \leq \tau} \|\Delta_h^{-1}(|\tilde{w}_h - w_h| \cdot |\tilde{w}_h + w_h|)\mathcal{E}_{B_h}(\sigma, w_h)w_h\|_{L^2}. \tag{4.10}
\end{aligned}$$

Proposition 3.5 yields

$$\begin{aligned}
&\|\Delta_h^{-1}(|\tilde{w}_h - w_h| \cdot |\tilde{w}_h + w_h|)\mathcal{E}_{B_h}(\sigma, w_h)w_h\|_{L^2} \\
&\leq C \|\tilde{w}_h - w_h\|_{L^2} \|\tilde{w}_h + w_h\|_{H^1} \|\mathcal{E}_{B_h}(\sigma, w_h)w_h\|_{H^1}.
\end{aligned}$$

Inserting $w_h = \varphi_{A_h}(\frac{1}{2}\tau)u$ and $\tilde{w}_h = \varphi_{A_h}(\frac{1}{2}\tau)\tilde{u}$ again and using Proposition 3.8 yields

$$\begin{aligned}
& \|\mathcal{E}_{B_h}(\tau, \varphi_{A_h}(\frac{1}{2}\tau)\tilde{u}) \varphi_{A_h}(\frac{1}{2}\tau)u - \varphi_{B_h}(\tau, \varphi_{A_h}(\frac{1}{2}\tau)u)\|_{L^2} \\
& \leq \tau C \|\varphi_{A_h}(\frac{1}{2}\tau)(\tilde{u} - u)\|_{L^2} \|\varphi_{A_h}(\frac{1}{2}\tau)(\tilde{u} + u)\|_{H^1} e^{\tau C \|u\|_{H^1}^2} \|u\|_{H^1} \\
& \leq \tau C \|\tilde{u} - u\|_{L^2} (\|\tilde{u}\|_{H^1} + \|u\|_{H^1}) e^{\tau C \|u\|_{H^1}^2} \|u\|_{H^1} \\
& \leq C \tau a_{S_h}^2 e^{\tau C \|u\|_{H^1}^2} \|\tilde{u} - u\|_{L^2}.
\end{aligned}$$

With $1 + x \leq e^x$ we finally obtain

$$\|\mathcal{S}_h(\tau, \tilde{u}) - \mathcal{S}_h(\tau, u)\|_{L^2} \leq e^{C \tau a_{S_h}^2} \|\tilde{u} - u\|_{L^2},$$

with $a_{S_h} = \max\{\|u\|_{H^1}, \|\tilde{u}\|_{H^1}\}$. To show the boundedness of the constant a_{S_h} in H^1 , we further need the H^1 stability result (Proposition 4.4), the H^1 interpolation error (Theorem 4.8) and the regularity of the H^1 solution (Lemma 4.9). □

Proof of the H^1 -stability in Proposition 4.4. We start similarly as for the L^2 case:

We combine the unitarity of the operator φ_{A_h} in H^1 (see Proposition 2.4, (2.28b)) with the linearity of φ_{A_h} and the definition of $\varphi_{B_h}(\tau, u) = \mathcal{E}_{B_h}(\tau, u)u$ with the linear operator $\mathcal{E}_{B_h}(\tau, \cdot)$ from (2.26b). With the abbreviations $w_h = \varphi_{A_h}(\frac{1}{2}\tau)u$, $\tilde{w}_h = \varphi_{A_h}(\frac{1}{2}\tau)\tilde{u}$ we obtain

$$\begin{aligned}
\|S_h(\tau, \tilde{u}) - S_h(\tau, u)\|_{H^1} &= \|\varphi_{A_h}(\frac{1}{2}\tau)\varphi_{B_h}(\tau, \tilde{w}_h) - \varphi_{A_h}(\frac{1}{2}\tau)\varphi_{B_h}(\tau, w_h)\|_{H^1} \\
&= \|\mathcal{E}_{B_h}(\tau, \tilde{w}_h)\tilde{w}_h - \mathcal{E}_{B_h}(\tau, w_h)w_h\|_{H^1} \\
&\leq \|\mathcal{E}_{B_h}(\tau, \tilde{w}_h)\tilde{w}_h - \mathcal{E}_{B_h}(\tau, \tilde{w}_h)w_h\|_{H^1} + \|\mathcal{E}_{B_h}(\tau, \tilde{w}_h)w_h - \mathcal{E}_{B_h}(\tau, w_h)w_h\|_{H^1} \\
&= \|\mathcal{E}_{B_h}(\tau, \tilde{w}_h)\varphi_{A_h}(\frac{1}{2}\tau)(\tilde{u} - u)\|_{H^1} \tag{4.11a} \\
&\quad + \|\mathcal{E}_{B_h}(\tau, \tilde{w}_h)w_h - \mathcal{E}_{B_h}(\tau, w_h)w_h\|_{H^1}. \tag{4.11b}
\end{aligned}$$

Now we separately estimate (4.11a) and (4.11b). First, from Proposition 3.8 we obtain for (4.11a)

$$\|\mathcal{E}_{B_h}(\tau, \tilde{w}_h)\varphi_{A_h}(\frac{1}{2}\tau)(\tilde{u} - u)\|_{H^1} \leq e^{\tau C \|\tilde{u}\|_{H^1}^2} \|\tilde{u} - u\|_{H^1}.$$

To obtain a bound for (4.11b), we use the linear variation-of-constant formula as in (A.1) and Proposition 3.8,

$$\begin{aligned}
& \|\mathcal{E}_{B_h}(\tau, \tilde{w}_h)w_h - \mathcal{E}_{B_h}(\tau, w_h)w_h\|_{H^1} \\
& \leq \tau \sup_{0 \leq \sigma \leq \tau} \|\mathcal{E}_{B_h}(\tau - \sigma, \tilde{w}_h)(\widehat{B}_h(\tilde{w}_h) - \widehat{B}_h(w_h)) \cdot \mathcal{E}_{B_h}(\sigma, w_h)w_h\|_{H^1} \\
& \leq \tau \sup_{0 \leq \sigma \leq \tau} e^{\tau C \|\tilde{w}_h\|_{H^1}^2} \|(\widehat{B}_h(\tilde{w}_h) - \widehat{B}_h(w_h)) \mathcal{E}_{B_h}(\sigma, w_h)w_h\|_{H^1} \\
& \leq \tau \sup_{0 \leq \sigma \leq \tau} e^{\tau C \|\tilde{u}\|_{H^1}^2} (\|(\nabla(\widehat{B}_h(\tilde{w}_h) - \widehat{B}_h(w_h))) \mathcal{E}_{B_h}(\sigma, w_h)w_h\|_{L^2} \tag{4.12a} \\
& \quad + \|(\widehat{B}_h(\tilde{w}_h) - \widehat{B}_h(w_h))\nabla(\mathcal{E}_{B_h}(\sigma, w_h)w_h)\|_{L^2}). \tag{4.12b}
\end{aligned}$$

For (4.12a) we use the bound (3.6) from Corollary 3.7,

$$\begin{aligned}
\|(\nabla(\widehat{B}_h(\tilde{w}_h) - \widehat{B}_h(w_h))) \mathcal{E}_{B_h}(\sigma, w_h) w_h\|_{L^2} &= \|(\nabla \Delta_h^{-1}(|\tilde{w}_h|^2 - |w_h|^2)) \mathcal{E}_{B_h}(\sigma, w_h) w_h\|_{L^2} \\
&\leq \|(\nabla \Delta_h^{-1}(|\tilde{w}_h - w_h| |\tilde{w}_h + w_h|)) \mathcal{E}_{B_h}(\sigma, w_h) w_h\|_{L^2} \\
&\leq C(1+h) \|\tilde{w}_h - w_h\|_{H^1} \|\tilde{w}_h + w_h\|_{H^1} \|\mathcal{E}_{B_h}(\sigma, w_h) w_h\|_{H^1} \\
&\leq C(1+h) \|\tilde{u} - u\|_{H^1} \|\tilde{u} + u\|_{H^1} e^{\tau C \|u\|_{H^1}^2} \|u\|_{H^1}.
\end{aligned}$$

For (4.12b) we use in addition (3.2), the L^∞ bound from Theorem 3.1,

$$\begin{aligned}
&\|(\widehat{B}_h(\tilde{w}_h) - \widehat{B}_h(w_h)) \nabla(\mathcal{E}_{B_h}(\sigma, w_h) w_h)\|_{L^2} \\
&\leq \|\Delta_h^{-1}(|\tilde{w}_h - w_h| |\tilde{w}_h + w_h|)\|_{L^\infty} \|\nabla(\mathcal{E}_{B_h}(\sigma, w_h) w_h)\|_{L^2} \\
&\leq (\|\Delta^{-1}(|\tilde{w}_h - w_h| |\tilde{w}_h + w_h|) - \Delta_h^{-1}(|\tilde{w}_h - w_h| |\tilde{w}_h + w_h|)\|_{L^\infty} \\
&\quad + \|\Delta^{-1}(|\tilde{w}_h - w_h| |\tilde{w}_h + w_h|)\|_{L^\infty}) \|\nabla(\mathcal{E}_{B_h}(\sigma, w_h) w_h)\|_{L^2} \\
&\leq (C h^{2-\frac{3}{2}} \|\Delta^{-1}(|\tilde{w}_h - w_h| |\tilde{w}_h + w_h|)\|_{H^2} + C \|\Delta^{-1}(|\tilde{w}_h - w_h| |\tilde{w}_h + w_h|)\|_{H^2}) \cdot e^{\sigma C \|w_h\|_{H^1}^2} \|w_h\|_{H^1} \\
&\leq C(1+h^{1/2}) \|\tilde{w}_h - w_h\|_{H^1} \|\tilde{w}_h + w_h\|_{H^1} e^{\tau C \|w_h\|_{H^1}^2} \|w_h\|_{H^1} \\
&\leq \|\tilde{w}_h - w_h\|_{H^1} (e^{\tau C \|w_h\|_{H^1}^2} C(1+h^{1/2})(\|\tilde{w}_h\|_{H^1} + \|w_h\|_{H^1}) \|w_h\|_{H^1}) \\
&\leq \|\tilde{u} - u\|_{H^1} (e^{\tau C \|u\|_{H^1}^2} C(1+h^{1/2})(\|\tilde{u}\|_{H^1} + \|u\|_{H^1}) \|u\|_{H^1}).
\end{aligned}$$

Summarizing, we conclude

$$\|S_h(\tau, \tilde{u}) - S_h(\tau, u)\|_{H^1} \leq \|\tilde{u} - u\|_{H^1} e^{\tau C a_{\mathcal{S}_h}^2} (1 + C \tau a_{\mathcal{S}_h}^2 e^{\tau C a_{\mathcal{S}_h}^2}),$$

where $a_{\mathcal{S}_h} = \max\{\|u\|_{H^1}, \|\tilde{u}\|_{H^1}\}$ and C depends on h , on d , and on Ω . The dependence on h for $h < 1$ is negligible and will be omitted in the further analysis.

With $1 + x \leq e^x$ we finally obtain

$$\|S_h(\tau, \tilde{u}) - S_h(\tau, u)\|_{H^1} \leq e^{C \tau a_{\mathcal{S}_h}^2} \|\tilde{u} - u\|_{H^1},$$

finishing the proof. \square

Proof of Proposition 4.5. This is conducted analogously to the proof of Proposition 4.4, substituting $\varphi_A(\frac{1}{2}\tau)u$ by w and $\varphi_A(\frac{1}{2}\tau)\tilde{u}$ by \tilde{w} , with the Sobolev embedding replaced by Hardy's inequality (see the proof in [29]),

$$\begin{aligned}
\|\Delta^{-1}(|\tilde{w} - w| \cdot |\tilde{w} + w|) \varphi_B(\tau, w)\|_{L^2} &\leq C \|\tilde{w} - w\|_{L^2} \|\tilde{w} + w\|_{H^1} \|\varphi_B(\tau, w)\|_{L^2} \\
&\leq C \|\tilde{u} - u\|_{L^2} \|\tilde{u} + u\|_{H^1} \|u\|_{L^2} \\
&\leq C \|\tilde{u} - u\|_{L^2} a_{\mathcal{S}}^2.
\end{aligned}$$

For the proof of H^1 -stability, which is less involved for \mathcal{S} than for \mathcal{S}_h , we refer to [29]. \square

4.4. Consistency of the fully discretized splitting operator

The aim of this section is to provide an estimate for $S_h(\tau, \mathcal{P}_h u) - \mathcal{P}_h S(\tau, u)$ in the H^1 - and the L^2 -norm, which will be presented in Theorem 4.8. As an essential part of the proof, we first bound the approximation error of φ_{A_h} as compared to $\mathcal{P}_h \varphi_A$ in these norms.

L^2 - and H^1 -estimates for $(\mathcal{P}_h \varphi_A(\tau) - \varphi_{A_h}(\tau) \mathcal{P}_h)u$. Propositions 4.6 and 4.7 below specify bounds for

$$e_A(\tau) := (\mathcal{P}_h \varphi_A(\tau) - \varphi_{A_h}(\tau) \mathcal{P}_h)u \in \mathcal{V}^h. \quad (4.13)$$

As before, p denotes the polynomial degree associated with the FEM subspace \mathcal{V}^h .

Proposition 4.6 requires a higher Sobolev regularity of $s+2$, but offers an additional dependence on τ , while Proposition 4.7 requires only a Sobolev regularity of s . Both results can be recast together as

$$\begin{aligned} \|e_A(\tau)\|_{L^2} &\leq C \tau \left(\frac{1}{\tau}\right)^\beta h^s \|u\|_{H^{s+2(1-\beta)}}, \\ \|e_A(\tau)\|_{H^1} &\leq C \tau \left(\frac{1}{\tau}\right)^\beta h^{s-1} \|u\|_{H^{s+2(1-\beta)}}, \end{aligned}$$

where $\beta = \max\{0, \text{sgn}(p+3-\ell)\}$ and $s = \min\{p+1, \ell\}$. Here, the dependence on $(\frac{1}{\tau})^\beta$ indicates a reduced approximation quality for $\ell < p+3$.

Proposition 4.6. *Let $u \in H^\ell$ for $\ell \geq 1$. Then, $e_A(\tau)$ from (4.13) satisfies*

$$\|e_A(\tau)\|_{L^2} \leq C \tau h^s \|u\|_{H^{s+2}}, \quad (4.14)$$

$$\|e_A(\tau)\|_{H^1} \leq C \tau h^{s-1} \|u\|_{H^{s+2}}, \quad (4.15)$$

where C depends on d and Ω and $s = \min\{p+1, \ell-2\}$.

Proposition 4.7. *Let $u \in H^\ell$ for $\ell \geq 1$. Then, $e_A(\tau)$ from (4.13) satisfies*

$$\|e_A(\tau)\|_{L^2} \leq C h^s \|u\|_{H^s}, \quad (4.16)$$

$$\|e_A(\tau)\|_{H^1} \leq C h^{s-1} \|u\|_{H^s}, \quad (4.17)$$

where C depends on d and Ω and $s = \min\{p+1, \ell\}$.

The proof is given after the proof of Proposition 4.6.

Proof of Proposition 4.6. We denote

$$y(t) = \varphi_A(t)u, \quad y_h(t) = \varphi_{A_h}(t)\mathcal{P}_h u, \quad \text{such that } e_A(t) = \mathcal{P}_h y(t) - y_h(t).$$

Here, $e_A(0) = 0$, and $y(t)$ and $y_h(t)$ are the solutions of

$$\begin{aligned} (\partial_t y(t), v)_{L^2} + \frac{1}{2} \mathbf{i} (\nabla y(t), \nabla v)_{L^2} &= 0 \quad \text{for all } v \in H_0^1, \\ (\partial_t y_h(t), v_h)_{L^2} + \frac{1}{2} \mathbf{i} (\nabla y_h(t), \nabla v_h)_{L^2} &= 0 \quad \text{for all } v \in \mathcal{V}_h. \end{aligned}$$

Setting $v = v_h = e_A(t)$ and subtracting these equations we obtain

$$(\partial_t(y(t) - y_h(t)), e_A(t))_{L^2} + \frac{1}{2} \mathbf{i} (\nabla y(t) - \nabla y_h(t), \nabla e_A(t))_{L^2} = 0.$$

With $y(t) - y_h(t) = e_A(t) - (\mathcal{P}_h y(t) - y(t))$ this takes the form

$$(\partial_t e_A(t), e_A(t))_{L^2} - (\partial_t(\mathcal{P}_h y(t) - y(t)), e_A(t))_{L^2} + \frac{1}{2} \mathbf{i} (\nabla e_A(t), \nabla e_A(t))_{L^2} - (\nabla \mathcal{P}_h y(t) - \nabla y(t), \nabla e_A(t))_{L^2} = 0.$$

Due to the property (2.14a) of the Rayleigh-Ritz projection we have $(\nabla \mathcal{P}_h y(t) - \nabla y(t), \nabla e_A(t))_{L^2} = 0$. Thus we obtain

$$(\partial_t e_A(t), e_A(t))_{L^2} + \frac{1}{2} \mathbf{i} (\nabla e_A(t), \nabla e_A(t))_{L^2} = (\mathcal{P}_h \partial_t y(t) - \partial_t y(t), e_A(t))_{L^2},$$

and its complex conjugate

$$(e_A(t), \partial_t e_A(t))_{L^2} - \frac{1}{2} i (\nabla e_A(t), \nabla e_A(t))_{L^2} = (e_A(t), \mathcal{P}_h \partial_t y(t) - \partial_t y(t))_{L^2}.$$

Adding these equations gives

$$2 \Re(\partial_t e_A(t), e_A(t))_{L^2} = 2 \Re(\mathcal{P}_h \partial_t y(t) - \partial_t y(t), e_A(t))_{L^2}. \quad (4.18)$$

For the left-hand side of (4.18) we find

$$2 \Re(\partial_t e_A(t), e_A(t))_{L^2} = \partial_t \|e_A(t)\|_{L^2}^2 = 2 \|e_A(t)\|_{L^2} \partial_t \|e_A(t)\|_{L^2},$$

and on the right-hand side of (4.18) we apply the Cauchy-Schwarz and Hölder inequalities,

$$\begin{aligned} 2 \Re(\mathcal{P}_h \partial_t y(t) - \partial_t y(t), e_A(t))_{L^2} &\leq 2 (|\mathcal{P}_h \partial_t y(t) - \partial_t y(t)|, |e_A(t)|)_{L^2} \\ &\leq 2 \|\mathcal{P}_h \partial_t y(t) - \partial_t y(t)\|_{L^2} \|e_A(t)\|_{L^2}. \end{aligned}$$

Hence, (4.18) yields the inequality

$$2 \|e_A(t)\|_{L^2} \partial_t \|e_A(t)\|_{L^2} \leq 2 \|\mathcal{P}_h \partial_t y(t) - \partial_t y(t)\|_{L^2} \|e_A(t)\|_{L^2}.$$

Dividing by $2 \|e_A(t)\|_{L^2}$ we obtain

$$\partial_t \|e_A(t)\|_{L^2} \leq \|\mathcal{P}_h \partial_t y(t) - \partial_t y(t)\|_{L^2}.$$

Now we apply the bound for the projection operator from Theorem 3.2, yielding

$$\partial_t \|e_A(t)\|_{L^2} \leq \|\mathcal{P}_h \partial_t y(t) - \partial_t y(t)\|_{L^2} \leq C h^s \|\partial_t y(t)\|_{H^s}, \quad s = \min\{p+1, \ell\},$$

where l is the degree of maximal Sobolev regularity of $\partial_t y(t)$. Now we integrate over σ from 0 to t ,

$$\|e_A(t)\|_{L^2} - \|e_A(0)\|_{L^2} \leq C \int_0^t h^s \|\partial_t y(\sigma)\|_{H^s} d\sigma$$

and use the differential equation $\partial_t y(t) = \frac{1}{2} i \Delta y(t)$, which yields

$$\|e_A(t)\|_{L^2} \leq \|e_A(0)\|_{L^2} + C \int_0^t h^s \|\Delta y(\sigma)\|_{H^s} d\sigma.$$

With $e_A(0) = 0$, and taking the supremum over the integrand we finally obtain the L^2 -estimate (4.14).

The H^1 -estimate (4.15) now follows directly from the inverse estimate, Theorem 3.3. \square

Proof of Proposition 4.7. We start as in the proof of Proposition 4.6 and recall (4.18) in the form

$$\partial_t \|e_A(t)\|_{L^2}^2 = 2 \Re(\mathcal{P}_h \partial_t y(t) - \partial_t y(t), e_A(t))_{L^2}.$$

By integrating over σ from 0 to t , applying partial integration and using Hölder's inequality we obtain

$$\begin{aligned}
\|e_A(t)\|_{L^2}^2 - \|e_A(0)\|_{L^2} &= 2 \int_0^t \Re(\mathcal{P}_h \partial_\sigma y(\sigma) - \partial_\sigma y(\sigma), e_A(\sigma))_{L^2} d\sigma \leq 2 \Re \int_\Omega \left| \int_0^t \partial_\sigma (\mathcal{P}_h y(\sigma) - y(\sigma)) \overline{e_A(\sigma)} d\sigma \right| dx \\
&\leq 2 \Re \int_\Omega \left[\left[(\mathcal{P}_h y(\sigma) - y(\sigma)) \overline{e_A(\sigma)} \right]_0^t - \int_0^t (\mathcal{P}_h y(\sigma) - y(\sigma)) \partial_\sigma \overline{e_A(\sigma)} d\sigma \right] dx \\
&\leq 2 \left(\|\mathcal{P}_h y(t) - y(t)\|_{L^2} \|e_A(t)\|_{L^2} + \int_\Omega \sup_{0 \leq \sigma \leq t} |\mathcal{P}_h y(\sigma) - y(\sigma)| \cdot \left| \int_0^t \partial_\sigma e_A(\sigma) d\sigma \right| dx \right) \\
&\leq 2 \left(\|\mathcal{P}_h y(t) - y(t)\|_{L^2} \|e_A(t)\|_{L^2} + \sup_{0 \leq \sigma \leq t} \|\mathcal{P}_h y(\sigma) - y(\sigma)\|_{L^2} \|e_A(t)\|_{L^2} \right) \\
&\leq C h^s \sup_{0 \leq \sigma \leq t} \|y(\sigma)\|_{H^s} \cdot \|e_A(t)\|_{L^2},
\end{aligned}$$

for C depending on d and Ω . Since $e_A(0) = 0$, dividing by $\|e_A(t)\|_{L^2}$ results in the L^2 -estimate of Proposition 4.7.

The H^1 -estimate now follows directly from the inverse estimate, Theorem 3.3. \square

The major part of the proof of Theorem 4.3 relies on the following consistency result for the splitting operator \mathcal{S}_h .

Theorem 4.8. *Let $u \in H^l$ for $l \geq 1$, and $\|u\|_{H^s} \leq M_s$ for $s = \min\{l, p+1\}$. Then, the difference $\mathcal{S}_h(\tau, \mathcal{P}_h u) - \mathcal{P}_h \mathcal{S}(\tau, u)$ is bounded by*

$$\begin{aligned}
\|\mathcal{S}_h(\tau, \mathcal{P}_h u) - \mathcal{P}_h \mathcal{S}(\tau, u)\|_{L^2} &\leq C \tau \left(1 + \frac{1}{\tau}\right)^\beta h^s, \\
\|\mathcal{S}_h(\tau, \mathcal{P}_h u) - \mathcal{P}_h \mathcal{S}(\tau, u)\|_{H^1} &\leq C \tau \left(1 + \frac{1}{\tau}\right)^\beta h^{s-1},
\end{aligned} \quad \beta = \max\{0, \operatorname{sgn}(p+3-l)\},$$

where C depends on $\|u\|_{H^{s+2(1-\beta)}}$, d and Ω .

Proof. We consider the specific errors of the subflows φ_A and φ_B and take account of the special structure of the Strang splitting operator. The difference $\varphi_{B_h}(\tau, \mathcal{P}_h u) - \mathcal{P}_h \varphi_B(\tau, u)$ is recast as a sum of terms with appropriate asymptotics in terms of τ and h . In the final step, we use the unitarity of φ_{B_h} and \mathcal{E}_{B_h} . We abbreviate $w_h = \varphi_{A_h}(\frac{1}{2}\tau) \mathcal{P}_h u$ and $w = \varphi_A(\frac{1}{2}\tau) u$ and obtain

$$\begin{aligned}
&\|\mathcal{S}_h(\tau, \mathcal{P}_h u) - \mathcal{P}_h \mathcal{S}(\tau, u)\|_{L^2} \\
&= \|\varphi_{A_h}(\frac{1}{2}\tau) \varphi_{B_h}(\tau, w_h) - \mathcal{P}_h \varphi_A(\frac{1}{2}\tau) \varphi_B(\tau, w)\|_{L^2} \\
&\leq \|\varphi_{A_h}(\frac{1}{2}\tau) \varphi_{B_h}(\tau, w_h) - \varphi_{A_h}(\frac{1}{2}\tau) \varphi_{B_h}(\tau, \mathcal{P}_h w)\|_{L^2} \\
&\quad + \|\varphi_{A_h}(\frac{1}{2}\tau) \varphi_{B_h}(\tau, \mathcal{P}_h w) - \varphi_{A_h}(\frac{1}{2}\tau) \mathcal{P}_h \varphi_B(\tau, w)\|_{L^2} \\
&\quad + \|\varphi_{A_h}(\frac{1}{2}\tau) \mathcal{P}_h \varphi_B(\tau, w) - \mathcal{P}_h \varphi_A(\frac{1}{2}\tau) \varphi_B(\tau, w)\|_{L^2} \\
&\leq \|\mathcal{E}_{B_h}(\tau, w_h) w_h - \mathcal{E}_{B_h}(\tau, w_h) \mathcal{P}_h w\|_{L^2} + \|\mathcal{E}_{B_h}(\tau, w_h) \mathcal{P}_h w - \mathcal{E}_{B_h}(\tau, \mathcal{P}_h w) \mathcal{P}_h w\|_{L^2} \\
&\quad + \|\mathcal{E}_{B_h}(\tau, \mathcal{P}_h w) \mathcal{P}_h w - \mathcal{E}_B(\tau, w) \mathcal{P}_h w\|_{L^2} + \|\mathcal{E}_B(\tau, w) \mathcal{P}_h w - \mathcal{P}_h (\mathcal{E}_B(\tau, w) w)\|_{L^2} \\
&\quad + \|\varphi_{A_h}(\frac{1}{2}\tau) \mathcal{P}_h \varphi_B(\tau, w) - \mathcal{P}_h \varphi_A(\frac{1}{2}\tau) \varphi_B(\tau, w)\|_{L^2} \\
&\leq \|w_h - \mathcal{P}_h w\|_{L^2} \tag{4.19a} \\
&\quad + \|\mathcal{E}_{B_h}(\tau, w_h) \mathcal{P}_h w - \mathcal{E}_{B_h}(\tau, \mathcal{P}_h w_h) \mathcal{P}_h w\|_{L^2} \tag{4.19b} \\
&\quad + \|\mathcal{E}_{B_h}(\tau, \mathcal{P}_h w) \mathcal{P}_h w - \mathcal{E}_B(\tau, w) \mathcal{P}_h w\|_{L^2} \tag{4.19c} \\
&\quad + \|\mathcal{E}_B(\tau, w) \mathcal{P}_h w - \mathcal{P}_h (\mathcal{E}_B(\tau, w) w)\|_{L^2} \tag{4.19d} \\
&\quad + \|(\varphi_{A_h}(\frac{1}{2}\tau) \mathcal{P}_h - \mathcal{P}_h \varphi_A(\frac{1}{2}\tau)) \varphi_B(\tau, w)\|_{L^2}. \tag{4.19e}
\end{aligned}$$

Now, we consider the expressions (4.19) and obtain the following five estimates.

- For (4.19a) we use the Propositions 4.6 and 4.7 and obtain

$$\|w_h - \mathcal{P}_h w\|_{L^2} \leq C \tau h^s \left(\frac{1}{\tau}\right)^\beta \|u\|_{H^{s+2(1-\beta)}},$$

where $s = \min\{l, p + 1\}$ and $\beta = \max\{0, \text{sgn}(p + 3 - l)\}$.

- For (4.19b), we use the linear variation-of-constant formula as in (A.1), with arguments $u = \mathcal{P}_h w$, $\tilde{u} = w_h$, and obtain

$$\begin{aligned} & \mathcal{E}_{B_h}(\tau, \mathcal{P}_h w) \mathcal{P}_h w - \mathcal{E}_{B_h}(\tau, w_h) \mathcal{P}_h w \\ &= \int_0^\tau \mathcal{E}_{B_h}(\tau - \sigma, w_h) (\widehat{B}_h(\mathcal{P}_h w) - \widehat{B}_h(w_h)) \mathcal{E}_{B_h}(\sigma, \mathcal{P}_h w) \mathcal{P}_h w \, d\sigma. \end{aligned}$$

Hence

$$\|\mathcal{E}_{B_h}(\tau, w_h) \mathcal{P}_h w - \mathcal{E}_{B_h}(\tau, \mathcal{P}_h w) \mathcal{P}_h w\|_{L^2} \leq \tau \sup_{0 \leq \sigma \leq \tau} \|(\widehat{B}_h(w_h) - \widehat{B}_h(\mathcal{P}_h w)) \varphi_{B_h}(\sigma, \mathcal{P}_h w)\|_{L^2},$$

since \mathcal{E}_{B_h} is unitary. We now proceed similarly as in Sec. 3. By the same argument as in (4.10) we obtain

$$\begin{aligned} \|(\widehat{B}_h(w_h) - \widehat{B}_h(\mathcal{P}_h w)) \varphi_{B_h}(\sigma, \mathcal{P}_h w)\|_{L^2} &= \|\Delta_h^{-1} (|w_h|^2 - |\mathcal{P}_h w|^2) \mathcal{E}_{B_h}(\sigma, \mathcal{P}_h w) \mathcal{P}_h w\|_{L^2} \\ &\leq \|\Delta_h^{-1} (|w_h - \mathcal{P}_h w| |w_h + \mathcal{P}_h w|) \cdot \mathcal{E}_{B_h}(\sigma, \mathcal{P}_h w) \mathcal{P}_h w\|_{L^2}. \end{aligned}$$

Via Propositions 3.5 and 3.8 this can further be bounded by

$$C \|w_h - \mathcal{P}_h w\|_{L^2} \|w_h + \mathcal{P}_h w\|_{H^1} e^{\sigma C \|u\|_{H^1}^2} \|u\|_{H^1}.$$

Now we use Propositions 4.6 and 4.7 applied to the term $\|w_h - \mathcal{P}_h w\|_{L^2}$ in combination with the conservation properties of φ_A and φ_{A_h} (see (2.10a) and (2.28)) and obtain

$$\begin{aligned} & \|w_h - \mathcal{P}_h w\|_{L^2} \|w_h + \mathcal{P}_h w\|_{H^1} e^{\sigma C \|u\|_{H^1}^2} \|u\|_{H^1} \\ & \leq C \tau \left(\frac{1}{\tau}\right)^\beta h^s \|u\|_{H^{s+2(1-\beta)}} (\|\mathcal{P}_h u\|_{H^1} + \|\mathcal{P}_h w\|_{H^1}) e^{\sigma C \|u\|_{H^1}^2} \|u\|_{H^1}, \end{aligned} \quad (4.20)$$

where $s = \min\{l, p + 1\}$ and $\beta = \max\{0, \text{sgn}(p + 3 - l)\}$.

The projection property (2.14c) and (4.20) yield

$$\begin{aligned} & \|\mathcal{E}_{B_h}(\tau, w_h) \mathcal{P}_h w - \mathcal{E}_{B_h}(\tau, \mathcal{P}_h w) \mathcal{P}_h w\|_{L^2} \\ & \leq C \tau^2 \left(\frac{1}{\tau}\right)^\beta h^s \|u\|_{H^{s+2(1-\beta)}} (\|\mathcal{P}_h u\|_{H^1} + \|\mathcal{P}_h w\|_{H^1}) e^{\tau C \|u\|_{H^1}^2} \|u\|_{H^1} \\ & \leq C \tau^2 \left(\frac{1}{\tau}\right)^\beta h^s e^{\tau C \|u\|_{H^1}^2} \|u\|_{H^{s+2(1-\beta)}} \|u\|_{H^1}^2. \end{aligned} \quad (4.21)$$

- For (4.19c) we use variation of constants as in (A.2),

$$\mathcal{E}_{B_h}(\tau, \mathcal{P}_h w) \mathcal{P}_h w - \mathcal{E}_B(\tau, w) \mathcal{P}_h w = \int_0^\tau \mathcal{E}_{B_h}(\tau - \sigma, \mathcal{P}_h w) (\widehat{B}_h(\mathcal{P}_h w) - \widehat{B}(w)) \mathcal{E}_B(\sigma, w) \mathcal{P}_h w \, d\sigma.$$

Hence, with $\widehat{B}_h(w) = \mathcal{P}_h \widehat{B}(w)$,

$$\begin{aligned} \|\mathcal{E}_{B_h}(\tau, \mathcal{P}_h w) \mathcal{P}_h w - \mathcal{E}_B(\tau, w) \mathcal{P}_h w\|_{L^2} &\leq C \tau \sup_{0 \leq \sigma \leq \tau} \|(\widehat{B}_h(\mathcal{P}_h w) - \widehat{B}(w)) \mathcal{E}_B(\sigma, w) \mathcal{P}_h w\|_{L^2} \\ &\leq C \tau \sup_{0 \leq \sigma \leq \tau} (\|(\widehat{B}_h(\mathcal{P}_h w) - \widehat{B}_h(w)) \mathcal{P}_h w\|_{L^2} + \|(\widehat{B}_h(w) - \widehat{B}(w)) \mathcal{P}_h w\|_{L^2}) \\ &= C \tau \sup_{0 \leq \sigma \leq \tau} (\|(\widehat{B}_h(\mathcal{P}_h w) - \widehat{B}_h(w)) \mathcal{P}_h w\|_{L^2} + \|(\mathcal{P}_h(\widehat{B}(w)) - \widehat{B}(w)) \mathcal{P}_h w\|_{L^2}). \end{aligned}$$

Now we separately estimate the two contributions on the right-hand side. Analogously as for (4.19b), we have

$$\begin{aligned} \|(\widehat{B}_h(\mathcal{P}_h w) - \widehat{B}_h(w)) \mathcal{P}_h w\|_{L^2} &\leq C \|\mathcal{P}_h w - w\|_{L^2} \|\mathcal{P}_h w + w\|_{H^1} \|\mathcal{P}_h w\|_{H^1} \\ &\leq C h^s \|w\|_{H^s} (\|w\|_{H^1} + \|\mathcal{P}_h w\|_{H^1}) \|\mathcal{P}_h w\|_{H^1} \\ &\leq C h^s \|w\|_{H^s} \|w\|_{H^1}^2. \end{aligned}$$

For the second contribution we make use of an estimate based on Theorem 3.1 and the Sobolev embeddings of H^1 in L^4 and H^{s+1} in W_4^s ,

$$\begin{aligned} \|(\mathcal{P}_h(\widehat{B}(w)) - \widehat{B}(w)) \mathcal{P}_h w\|_{L^2} &\leq \|\mathcal{P}_h(\widehat{B}(w)) - \widehat{B}(w)\|_{L^4} \|\mathcal{P}_h w\|_{L^4} \\ &\leq C h^s \|\widehat{B}(w)\|_{W_4^s} \|\mathcal{P}_h w\|_{L^4} \\ &\leq C h^s \|\widehat{B}(w)\|_{H^{s+1}} \|\mathcal{P}_h w\|_{H^1} \\ &\leq C h^s \|w\|_{H^{s-1}}^2 \|\mathcal{P}_h w\|_{H^1} \\ &\leq C h^s \|w\|_{H^{\eta_1}}^2 \|w\|_{H^1}, \quad \eta_1 = s - \chi_{[3, \infty)}(s), \end{aligned}$$

where χ is the indicator function. The two values of η_1 are related to different bounds for $s \in \{1, 2\}$, $\|u v\|_{H^{s-1}} \leq C \|u\|_{H^s} \|v\|_{H^s}$, while for higher values of s , the bounds are valid with $\|u v\|_{H^s} \leq C \|u\|_{H^s} \|v\|_{H^s}$.

Altogether this yields

$$\|\mathcal{E}_{B_h}(\tau, \mathcal{P}_h w) \mathcal{P}_h w - \mathcal{E}_B(\tau, w) \mathcal{P}_h w\|_{L^2} \leq C \tau h^s (\|w\|_{H^{\eta_1}}^2 \|w\|_{H^1} + \|w\|_{H^s} \|w\|_{H^1}^2)$$

with $\eta_1 = s - \chi_{[3, \infty)}(s)$.

- For (4.19d), we apply variation of constants as for (4.19c) and obtain

$$\begin{aligned} &\|\mathcal{E}_B(\tau, w) \mathcal{P}_h w - \mathcal{P}_h(\mathcal{E}_B(\tau, w) w)\|_{L^2} \\ &\leq C \tau \|\widehat{B}(w) \mathcal{P}_h(\mathcal{E}_B(\tau, w) w) - \mathcal{P}_h(\widehat{B}(w) \mathcal{E}_B(\tau, w) w)\|_{L^2} \\ &\leq C \tau (\|\widehat{B}(w) \mathcal{P}_h(\mathcal{E}_B(\tau, w) w) - \widehat{B}(w) \mathcal{E}_B(\tau, w) w\|_{L^2} \\ &\quad + \|\widehat{B}(w) \mathcal{E}_B(\tau, w) w - \mathcal{P}_h(\widehat{B}(w) \mathcal{E}_B(\tau, w) w)\|_{L^2}) \\ &\leq C \tau (\|\widehat{B}(w)\|_{H^2} \|\mathcal{P}_h(\mathcal{E}_B(\tau, w) w) - \mathcal{E}_B(\tau, w) w\|_{L^2} \\ &\quad + \|\widehat{B}(w) \mathcal{E}_B(\tau, w) w - \mathcal{P}_h(\widehat{B}(w) \mathcal{E}_B(\tau, w) w)\|_{L^2}) \\ &\leq C \tau (\|w\|_{L^2}^2 h^s \|\mathcal{E}_B(\tau, w) w\|_{H^s} + h^s \|\widehat{B}(w) \mathcal{E}_B(\tau, w) w\|_{H^s}) \\ &\leq C \tau h^s (\|w\|_{H^1}^2 \|\mathcal{E}_B(\tau, w) w\|_{H^s} + \|\widehat{B}(w) \mathcal{E}_B(\tau, w) w\|_{H^s}). \end{aligned}$$

Now we consider $\|\widehat{B}(w)\mathcal{E}_B(\tau, w)w\|_{H^s}$ in more detail for different values of s ,

$$\begin{aligned}\|\widehat{B}(w)\mathcal{E}_B(\tau, w)w\|_{H^s} &\leq \|\Delta^{-1}|w|^2\|_{H^\kappa} \|\mathcal{E}_B(\tau, w)w\|_{H^s} \quad \kappa = \max\{s, 2\} \\ &\leq \|w\|_{H^{\eta_2}}^2 e^{\tau L_s} \|w\|_{H^s}, \quad \eta_2 = s - \chi_{[2, \infty)}(s) - \chi_{[4, \infty)}(s),\end{aligned}$$

with L_s from (3.8) and where χ is the indicator function. Hence,

$$\|\mathcal{E}_B(\tau, w)\mathcal{P}_h w - \mathcal{P}_h(\mathcal{E}_B(\tau, w)w)\|_{L^2} \leq C \tau h^s e^{\tau L_s} \|u\|_{H^s} \|u\|_{H^{\eta_2}}^2.$$

- For (4.19e), we use the results from Propositions 4.6 and 4.7, and obtain

$$\begin{aligned}\|(\varphi_{A_h}(\tfrac{1}{2}\tau)\mathcal{P}_h - \mathcal{P}_h\varphi_A(\tfrac{1}{2}\tau))\varphi_B(\tau, w)\|_{L^2} &\leq C \tau (\tfrac{1}{\tau})^\beta h^s \sup_{0 \leq \tau_1 \leq \tau} \|\varphi_A(\tfrac{1}{2}\tau_1)\varphi_B(\tau_1, w)\|_{H^{s+2(1-\beta)}} \\ &\leq C \tau (\tfrac{1}{\tau})^\beta h^s \sup_{0 \leq \tau_1 \leq \tau} \|\varphi_B(\tau_1, w)\|_{H^{s+2(1-\beta)}} \\ &\leq C \tau (\tfrac{1}{\tau})^\beta h^s e^{\tau L_{s+2(1-\beta)}} \|u\|_{H^{s+2(1-\beta)}},\end{aligned}$$

where $s = \min\{l, p+1\}$ and $\beta = \max\{0, \operatorname{sgn}(p+3-l)\}$.

- Combining these results, we obtain

$$\begin{aligned}\|\mathcal{S}_h(\tau, \mathcal{P}_h u) - \mathcal{P}_h \mathcal{S}(\tau, u)\|_{L^2} &\leq C \tau h^s \left((\tfrac{1}{\tau})^\beta \|u\|_{H^{s+2(1-\beta)}} + \tau (\tfrac{1}{\tau})^\beta e^{\tau C} \|u\|_{H^1}^2 \|u\|_{H^{s+2(1-\beta)}} \|u\|_{H^1}^2 \right. \\ &\quad \left. + \|u\|_{H^{\eta_1}}^2 \|u\|_{H^1} + \|u\|_{H^s} \|u\|_{H^1}^2 + e^{\tau L_s} \|u\|_{H^s} \|u\|_{H^{\eta_2}}^2 \right. \\ &\quad \left. + (\tfrac{1}{\tau})^\beta e^{\tau L_{s+2(1-\beta)}} \|u\|_{H^{s+2(1-\beta)}} \right) \\ &\leq C \tau h^s \left(\|u\|_{H^s} \|u\|_{H^{\eta_1}} \|u\|_{H^1} + (\tfrac{1}{\tau})^\beta e^{\tau L_{s+2(1-\beta)}} \|u\|_{H^{s+2(1-\beta)}} \right. \\ &\quad \left. + e^{\tau L_s} \|u\|_{H^s} \|u\|_{H^{\eta_2}}^2 + \tau (\tfrac{1}{\tau})^\beta e^{\tau C} \|u\|_{H^1}^2 \|u\|_{H^{s+2(1-\beta)}} \|u\|_{H^1}^2 \right),\end{aligned}$$

where $\eta_1 = s - \chi_{[3, \infty)}(s)$ and $\eta_2 = s - \chi_{[2, \infty)}(s) - \chi_{[4, \infty)}(s)$. Thus, we can find a constant C^* for some $\tau < t_n$ such that

$$\|\mathcal{S}_h(\tau, \mathcal{P}_h u) - \mathcal{P}_h \mathcal{S}(\tau, u)\|_{L^2} \leq C^* \tau (1 + \tfrac{1}{\tau})^\beta h^s. \quad (4.22)$$

The H^1 approximation result follows directly from the L^2 approximation via the inverse estimate, Theorem 3.3,

$$\|\mathcal{S}_h(\tau, \mathcal{P}_h u) - \mathcal{P}_h \mathcal{S}(\tau, u)\|_{H^1} \leq h^{-1} \|\mathcal{S}_h(\tau, \mathcal{P}_h u) - \mathcal{P}_h \mathcal{S}(\tau, u)\|_{L^2},$$

which concludes the proof. \square

4.5. H^1 -regularity of the fully discretized splitting operator

Lemma 4.9. *Suppose that $u \in H^4$, $t_n \leq T$ is fixed and that h is sufficiently small compared to $\|u\|_{H^4}$ and T . Then we can bound the iterative application of the splitting operator \mathcal{S}_h from (2.27) in H^1 in terms of \tilde{C} depending on t_n and on $\|u\|_{H^4}$,*

$$\max_{1 \leq m \leq n} \|\mathcal{S}_h^m \mathcal{P}_h \mathcal{S}^{n-m} u\|_{H^1} \leq \tilde{C}.$$

Proof. We use induction over n for $t_n = n\tau \leq T$. For $n = 1$ we apply Proposition 4.4, giving

$$\|\mathcal{S}_h \mathcal{P}_h u\|_{H^1} \leq e^{C \tau a_1^2} \|u\|_{H^1},$$

where $a_1 = \|u\|_{H^1}$. For $n = 2$ we use the consistency estimate (4.22), giving

$$\begin{aligned} \|\mathcal{S}_h^2 \mathcal{P}_h u\|_{H^1} &= \|\mathcal{S}_h \mathcal{S}_h \mathcal{P}_h u\|_{H^1} \\ &\leq \|\mathcal{P}_h \mathcal{S}^2 u\|_{H^1} + \|(\mathcal{P}_h \mathcal{S} - \mathcal{S}_h \mathcal{P}_h) \mathcal{S} u\|_{H^1} + \|\mathcal{S}_h (\mathcal{P}_h \mathcal{S} u - \mathcal{S}_h \mathcal{P}_h u)\|_{H^1} \\ &\leq \|\mathcal{S}^2 u\|_{H^1} + C^* \tau h + e^{C \tau a_2^2} \|\mathcal{P}_h \mathcal{S} u - \mathcal{S}_h \mathcal{P}_h u\|_{H^1} \\ &\leq \|\mathcal{S}^2 u\|_{H^1} + C^* \tau h (1 + e^{C \tau a_2^2}), \end{aligned}$$

where $a_2 = \max\{\|\mathcal{S} u\|_{H^1}, \|\mathcal{S}_h \mathcal{P}_h u\|_{H^1}\}$ and where C^* depends in particular on $\|\mathcal{S}^m u\|_{H^4}$, $m \in \{0, 1\}$ as it appears in (4.22). Here we have used the H^1 -bound of Theorem 4.8 for $s = 2$, which involves the regularity requirement $u \in H^4$. For sufficiently small h we can control the contribution of $\tau (1 + e^{C \tau a_2^2})$ such that

$$\|\mathcal{S}_h^2 \mathcal{P}_h u\|_{H^1} \leq \|\mathcal{S}^2 u\|_{H^1} + C^* \leq \tilde{C},$$

for a constant \tilde{C} depending on t_n and $\|u\|_{H^4}$. This follows from the regularity of the splitting solution in H^4 ,

$$\|\mathcal{S}^2 u\|_{H^4} \leq e^{L_4 t_2} \|u\|_{H^4} \leq e^{L_4 T} \|u\|_{H^4} \leq \frac{\tilde{C}}{2},$$

with L_4 from (3.8).

• $n \mapsto n + 1$. We assume inductively that $a_n = \max_{m \in \{0, \dots, n-1\}} \|\mathcal{S}_h^m \mathcal{P}_h \mathcal{S}^{n-1-m} u\|_{H^1}$ satisfies $a_n \leq \tilde{C}$ and show

$$a_{n+1} \leq \tilde{C}.$$

In particular, the constant \tilde{C} depends on T and $\|u\|_{H^4}$ such that

$$\|\mathcal{S}^n u\|_{H^4} \leq e^{L_4 t_n} \|u\|_{H^4} \leq \frac{\tilde{C}}{2}.$$

Now we use this inequality to show that $\|\mathcal{S}_h^n \mathcal{P}_h u\|_{H^1}$ is bounded. In fact,

$$\begin{aligned} \|\mathcal{S}_h^n \mathcal{P}_h u\|_{H^1} &\leq \left\| \mathcal{P}_h \mathcal{S}^n u - \sum_{k=1}^n (\mathcal{S}_h^{k-1} \mathcal{P}_h \mathcal{S} \mathcal{S}^{n-k} u - \mathcal{S}_h^{k-1} \mathcal{S}_h \mathcal{P}_h \mathcal{S}^{n-k} u) \right\|_{H^1} \\ &\leq \|\mathcal{P}_h \mathcal{S}^n u\|_{H^1} + \sum_{k=1}^n \|\mathcal{S}_h^{k-1} \mathcal{P}_h \mathcal{S} \mathcal{S}^{n-k} u - \mathcal{S}_h^{k-1} \mathcal{S}_h \mathcal{P}_h \mathcal{S}^{n-k} u\|_{H^1} \\ &\leq \|\mathcal{S}^n u\|_{H^1} + \sum_{k=1}^n e^{C \tau (k-1) a_n^2} \|\mathcal{P}_h \mathcal{S} \mathcal{S}^{n-k} u - \mathcal{S}_h \mathcal{P}_h \mathcal{S}^{n-k} u\|_{H^1} \\ &\leq \|\mathcal{S}^n u\|_{H^1} + \sum_{k=1}^n C^* \tau h e^{C \tau (k-1) a_n^2} \leq \|\mathcal{S}^n u\|_{H^1} + C^* n \tau h e^{C \tau n a_n^2} \\ &\leq \|\mathcal{S}^n u\|_{H^1} + C^* T h e^{C T a_n^2} \leq \|\mathcal{S}^n u\|_{H^1} + C^* \leq \tilde{C} \end{aligned}$$

for sufficiently small h to control $t_n e^{C T a_n^2}$.

Obviously, we can apply the same estimate for terms of the form

$$\|\mathcal{S}_h^m \mathcal{P}_h \mathcal{S}^{n-m} u\|_{H^1}, \quad m = 0 \dots n.$$

Hence

$$a_{n+1} = \max_{m \in \{0, \dots, n\}} \|\mathcal{S}_h^m \mathcal{P}_h \mathcal{S}^{n-m} u\|_{H^1} \leq \tilde{C}.$$

□

This proof was inspired by [16], where an Hermite spectral discretization was considered.

5. IMPLEMENTATION AND NUMERICAL RESULTS

5.1. Implementation aspects

For the efficient implementation of the FEM model introduced in Sec. 2, we use a method based on [13] and [28]. To this end we choose (tensor) Gauss–Lobatto nodes of degree p on rectangular elements for the definition of the nodal basis and for the numerical evaluation of the inner products in (2.17). These nodes allow exact integration of polynomials up to degree $2p - 1$, hence the evaluation of the matrix K , which involves the gradients $\nabla v_{(k,j)}$, is exact. The evaluation of the matrix M involves integrals of the form

$$\int_{\Omega_k} v_{(k,i)}(x) v_{(k,j)}(x) dx \approx \sum_{\ell} w_{\ell} v_{(k,i)}(x_{\ell}) v_{(k,j)}(x_{\ell}) = \sum_{\ell} w_{\ell} \delta_{i\ell} \delta_{j\ell} = w_i \delta_{ij},$$

where w_{ℓ} are the associated quadrature weights. Hence the matrix M is diagonal, and $M^{-1}K$ preserves the sparsity of K (see Algorithm 1), and likewise for the matrix Φ .

Analogously, the evaluation of F simplifies to

$$F(c) = M \cdot (c .* \bar{c}),$$

where $.*$ denotes component-wise multiplication. For the computation of the numerical solution $\psi_n = \mathcal{S}_h^n(\tau, \psi_0)$ for the full FEM discretization, we refer to Algorithm 1.

The obtained systems of differential equations for φ_{A_h} can be solved efficiently via fast exponential solvers (for instance the function `expv` from the package `expokit`, see [37], which is based on an adaptive Krylov integrator, see [35]), and since K is a symmetric positive definite band matrix, the Poisson problem can be solved efficiently by common solvers for sparse systems of linear equations.

In Algorithm 1 we have indicated a time-adaptive version based on an appropriate local error estimator. For this purpose, one may e.g. adopt the approach from [6]. For adaptivity in space, an appropriate a posteriori error estimator is required, but this is not in the scope of this presentation.

5.2. Numerical example

We illustrate the performance of time-splitting for a two-dimensional test example. The problem data are chosen as follows:

- $\Omega = [0, 5]^2$
- $\psi_0(x, y) = 10 e^{-10((x-2.5)^2 + (y-2.5)^2)}$ (Gaussian initial state)
- Integration from $t = 0$ to $t = 0.1$. In Figure 1 we display the wave function at time $t = 0.1$ using a 100×100 mesh and polynomial basis functions of degree 2, obtained via a fourth order splitting method with time stepsize $\tau = 0.0005$.

Global time-splitting error. For the finite element discretization we choose 25×25 uniform rectangular elements of degree $p = 2$ with Gauss–Lobatto nodes. We apply time-splitting methods of orders $q = 1$ to 4, namely Lie–Trotter splitting ($q = 1$), Strang splitting ($q = 2$), a scheme of order $q = 3$ with rational coefficients by Ruth ([1, 3rd order scheme from the pair Emb 3/2 RA]), and an optimized scheme of order $q = 4$ by Blanes and Moan ([1, 4th order scheme from the pair Emb 4/3 BM PRK/A]); see the collection [1] for tables of coefficients and further references.

Algorithm 1 A splitting solution of the Schrödinger-Poisson problem

```

1: procedure SCHRÖDINGER-POISSON( $M, K, \psi_0$ )
2:    $\psi_0 \dots$  interpolated initial function
3:   procedure CALCULATE_MATRICES( $v_i$ )  $\triangleright v_i \dots$  Galerkin basis functions
4:     for  $k = 1 \dots n_G$  do  $\triangleright n_G \dots$  number of integration nodes per element
5:        $K_{i,j} := K_{i,j} + w_k \cdot \nabla v_i(x_k) \cdot \nabla v_j(x_k) \cdot \det(T_k)$   $\triangleright T_k \dots$  Jacobian of translation to  $x_k$ 
6:        $M_{i,j} := M_{i,j} + w_k \cdot v_i(x_k) \cdot v_j(x_k) \cdot \det(T_k)$   $\triangleright w_k \dots$  integration weights
7:       Preliminary calculation of  $\Phi(\cdot), F(\cdot)$ 
8:        $\Phi_{i,j} := \Phi_{i,j} + w_k \cdot v_m(x_k) \cdot v_i(x_k) \cdot v_j(x_k) \cdot \det(T_k)$   $\triangleright v_m v_i = v_i^2$  using  $v_m(x_k)v_i(x_k) = \delta_{m,i}\delta_{m,k}$ 
9:        $F_i := F_i + w_k \cdot v_i(x_k)^2 \cdot v_i(x_k) \cdot \det(T_k)$ 
10:    end for
11:  end procedure
12:   $t := \tau$   $\triangleright \tau \dots$  initial time stepsize
13:   $\psi := \psi_0$ 
14:  while  $t < T$  do
15:     $\psi_{\text{tmp}} := \psi_\tau(\tau, \psi, \alpha, \beta)$   $\triangleright \alpha, \beta \dots$  splitting coefficients
16:    err := error estimator( $\psi_{\text{tmp}}, \tau, \psi$ )  $\triangleright$  any suitable error estimator
17:    if err < tol then
18:       $\psi := \psi_{\text{tmp}}, t := t + \tau$ 
19:    else
20:      Choose smaller  $\tau$  to reduce err
21:    end if
22:  end while
23: end procedure

24: procedure  $\psi_\tau(\tau, \psi_{\text{inp}}, \alpha, \beta)$ 
25:    $\psi_\tau := \psi_{\text{inp}}$ 
26:   for  $k = 1 \dots n_s$  do  $\triangleright n_s \dots$  number of splitting stages
27:      $\psi_\tau = \varphi_{B_h}(\beta(k) \cdot \tau, \varphi_{A_h}(\alpha(k) \cdot \tau, \psi_\tau))$ 
28:   end for
29: end procedure

30: procedure  $\varphi_{A_h}(\tau, \psi_{\text{inp}})$ 
31:    $A := -i \frac{1}{2} M^{-1} \cdot K$   $\triangleright A \dots$  temporary matrix
32:    $\varphi_{A_h} := e^{\tau A} \cdot \psi_{\text{inp}}$   $\triangleright$  matrix exponential calculated via an effective solver (expokit)
33: end procedure

34: procedure  $\varphi_{B_h}(\tau, \psi_{\text{inp}})$ 
35:    $d := -K^{-1} \cdot F \cdot |\psi_{\text{inp}}|^2$   $\triangleright d \dots$  solution of Poisson problem
36:    $\hat{B} := -i M^{-1} \cdot \Phi \cdot d$   $\triangleright \hat{B} \dots$  diagonal matrix
37:    $\varphi_{B_h} := e^{\tau \hat{B}} \cdot \psi_{\text{inp}}$   $\triangleright$  exponential calculated via pointwise multiplication
38: end procedure

```

In Figure 2 we display the L^2 -norm of the global error at $t_n = 0.1$ for different choices of the time stepsize τ together with the observed orders \hat{q} ,

$$\|\psi(t_n) - \psi_n\|_{L^2} \approx C \tau^{\hat{q}}.$$

A reference solution was obtained using a high order splitting scheme with a significantly refined time stepsize.

FEM approximation error. In Figure 3 we document the behavior of the spatial discretization error using the Strang splitting method for a fixed time stepsize $\tau = 0.002$ in dependence of the FEM-mesh for different values of the polynomial degree p , varying the mesh parameter h from 1 to 2^{-6} and determining the respective observed order \hat{p} of the spatial error via extrapolation for $h \rightarrow 0$,

$$\|\psi(t_n) - \psi_n\|_{L^2} \approx C h^{\hat{p}+1}.$$

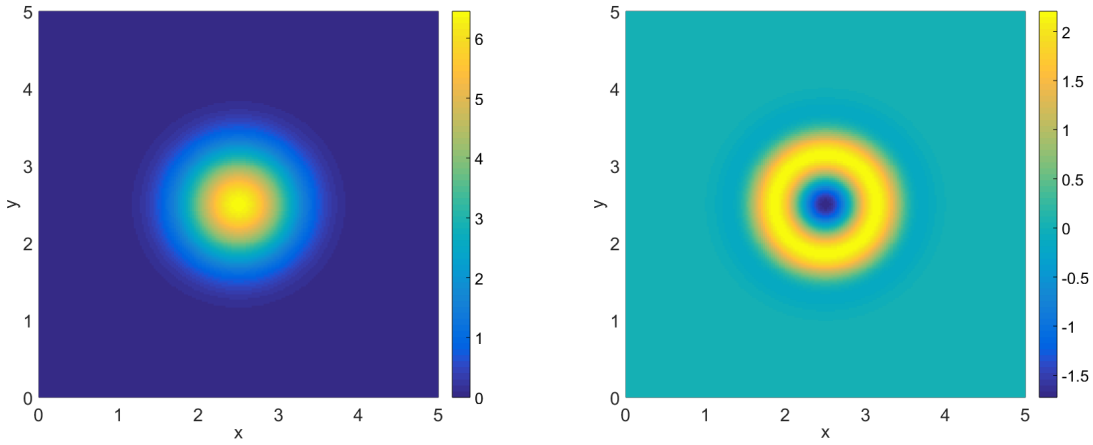


FIGURE 1. Wave function at $t = 0.1$. Left: Absolute value $|\psi|$. Right: Real part $\Re \psi$.

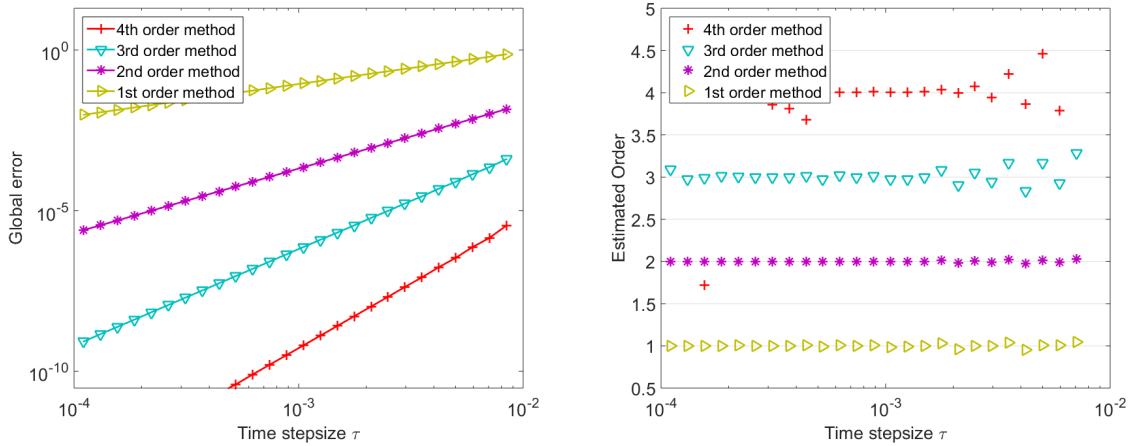


FIGURE 2. **Global time-splitting error.** Left: Global time-splitting error in L^2 at $t = 0.1$ in dependence of the time stepsize τ for splitting methods orders $q = 1$ to 4. Right: Observed order \hat{q} .

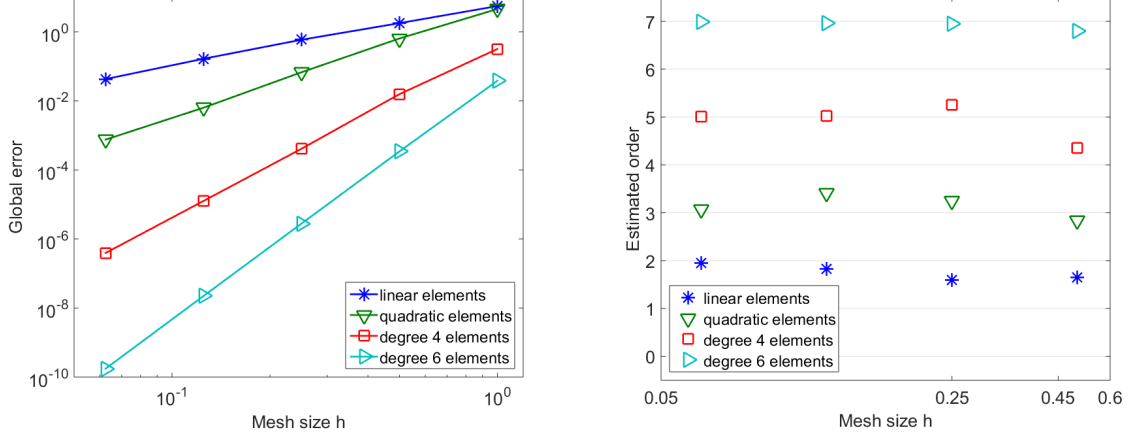


FIGURE 3. **Spatial approximation order.** Left: FEM approximation error in L^2 at $t = 0.1$ in dependence of the meshsize h for polynomial degree $p \in \{1, 2, 4, 6\}$. Right: Observed order $\hat{p} + 1$.

APPENDIX A. SOLUTION REPRESENTATION BY VARIATION-OF-CONSTANT FORMULAS

Since in our context nonlinear operators B and B_h arise, we will resort to the following variants of the variation-of-constants formula. We recall that B and \hat{B} are defined in (2.2a) and define subflows φ_B and \mathcal{E}_B in the subproblem (2.4a) and (2.5). In the spatially discrete case, the operators B_h and \hat{B}_h are defined in (2.24) and define the subproblems (2.16a) and (2.25) for the evolutionary operators φ_{B_h} and \mathcal{E}_{B_h} .

(i) **Same operators B_h , but with different argument.**

To rewrite the difference

$$\varphi_{B_h}(\tau, u) - \mathcal{E}_{B_h}(\tau, \tilde{u})u = \underbrace{\mathcal{E}_{B_h}(\tau, u)u}_{v(\tau)} - \underbrace{\mathcal{E}_{B_h}(\tau, \tilde{u})u}_{w(\tau)},$$

we use the fact that for all $\phi_h \in \mathcal{V}^h$,

$$(v'(\tau), \phi_h)_{L^2} = (\hat{B}_h(u)v(\tau), \phi_h)_{L^2}, \quad (w'(\tau), \phi_h)_{L^2} = (\hat{B}_h(\tilde{u})w(\tau), \phi_h)_{L^2}, \quad v(0) = w(0),$$

which defines a new differential equation,

$$\begin{cases} ((v - w)'(\tau), \phi_h)_{L^2} = (\hat{B}_h(\tilde{u})(v - w)(\tau) + (\hat{B}_h(u) - \hat{B}_h(\tilde{u}))v(\tau), \phi_h)_{L^2}, \\ ((v - w)(0), \phi_h)_{L^2} = 0. \end{cases}$$

By the variation-of-constant formula we obtain

$$(v - w)(\tau)u = \int_0^\tau \mathcal{E}_{B_h}(\tau - \sigma, \tilde{u}) (\hat{B}_h(u) - \hat{B}_h(\tilde{u})) \mathcal{E}_{B_h}(\sigma, u) u \, d\sigma. \quad (\text{A.1})$$

(ii) **Different operators B , B_h .**

To rewrite the difference

$$\mathcal{E}_B(\tau, \tilde{u})u - \varphi_{B_h}(\tau, u) = \underbrace{\mathcal{E}_B(\tau, \tilde{u})u}_{v(\tau)} - \underbrace{\varphi_{B_h}(\tau, u)}_{w(\tau)},$$

we use the fact that $\mathcal{V}^h \subset \mathcal{V}$, such that for all $\phi_h \in \mathcal{V}^h$,

$$(v'(\tau), \phi_h)_{L^2} = (\widehat{B}(\tilde{u})v(\tau), \phi_h)_{L^2}, \quad (w'(\tau), \phi_h)_{L^2} = (\widehat{B}_h(u)w(\tau), \phi_h)_{L^2}, \quad v(0) = w(0).$$

Again we obtain a differential equation,

$$\begin{cases} ((v-w)'(\tau), \phi_h)_{L^2} = (\widehat{B}_h(u)(v-w)(\tau) + (\widehat{B}(\tilde{u}) - \widehat{B}_h(u))v(\tau), \phi_h)_{L^2}, \\ ((v-w)(0), \phi_h)_{L^2} = 0 \end{cases}$$

such that the variation-of-constant formula yields

$$(v-w)(\tau)u = \int_0^\tau \mathcal{E}_{B_h}(\tau-\sigma, u) (\widehat{B}(\tilde{u}) - \widehat{B}_h(u)) \mathcal{E}_B(\sigma, \tilde{u}) u \, d\sigma. \quad (\text{A.2})$$

APPENDIX B. AUXILIARY INEQUALITIES

In our theoretical estimates, we recurrently resort to estimates of Sobolev type. For convenience of the reader, we briefly recapitulate these technical tools here. We start by repeating some elementary notions from functional analysis, see for example [10, 17, 31]. The underlying space is L^2 equipped with the inner product $(\cdot, \cdot)_{L^2}$,

$$(v, w)_{L^2} = \int_\Omega v(x) \overline{w(x)} \, dx, \quad v, w \in L^2,$$

and the norm $\|\cdot\|_{L^2}$, where Ω is a bounded domain with smooth boundary (for the Sobolev embeddings cited below, it is necessary that Ω satisfies the cone condition).

The set of all functions in L^2 having weak derivatives up to order $\leq k$ is denoted as the *Sobolev space* H^k . It is equipped with the norm

$$\|u\|_{H^k} := \left(\sum_\alpha \|\partial^\alpha u\|_{L^2}^2 \right)^{1/2},$$

where the sum is over all derivatives up to order k .

Furthermore, we will denote by $\|\cdot\|_{L^\infty}$ the supremum norm on the space of functions bounded almost everywhere.

In our analysis, we will make use of the following results, see for instance [10]. Our formulations are specific to \mathbb{R}^d , $d \in \{2, 3\}$:

Theorem B.1. *Let $k, m \in \mathbb{N}$ such that $k - m > 3/2$. Then for $u \in H^k$ there is a C^m function in the L^2 equivalence class of u and*

$$\|u\|_{C^m} := \sum \|\partial^\alpha u\|_{L^\infty} \leq \mathcal{C} \|u\|_{H^k},$$

where the sum is over all derivatives of order up to m .

This implies the following inequalities, see for instance [3], [10], [19], and [31]:

Corollary B.2. *For $u, v \in H^2$, the following inequalities hold:*

$$\begin{aligned} \|uv\|_{L^2} &\leq \|u\|_{L^2} \|v\|_{L^\infty} \leq \mathcal{C} \|u\|_{L^2} \|v\|_{H^2}, \\ \|uv\|_{H^1} &\leq \mathcal{C} \|u\|_{H^1} \|v\|_{H^2}, \\ \|uv\|_{H^2} &\leq \mathcal{C} \|u\|_{H^2} \|v\|_{H^2}, \\ \|uv\|_{L^2} &\leq \mathcal{C} \|u\|_{L^4} \|v\|_{L^4} \leq \mathcal{C} \|u\|_{H^1} \|v\|_{H^1}, \\ \|uvw\|_{L^2} &\leq \mathcal{C} \|u\|_{L^6} \|v\|_{L^6} \|w\|_{L^6} \leq \mathcal{C} \|u\|_{H^1} \|v\|_{H^1} \|w\|_{H^1}. \end{aligned}$$

REFERENCES

- [1] Coefficients of various splitting methods. <http://www.asc.tuwien.ac.at/~winfried/splitting/>.
- [2] W. Auzinger, H. Hofstätter, O. Koch, and M. Thalhammer, Convergence analysis of splitting methods for nonlinear reaction-diffusion equations with Dirichlet or Neumann boundary conditions, in preparation.
- [3] R.A. Adams. *Sobolev Spaces*. Academic Press, Orlando, Fla., 1975.
- [4] X. Antoine, W. Bao, and Ch. Besse. Computational methods for the dynamics of the nonlinear Schrödinger/Gross–Pitaevskii equations. *Comput. Phys. Commun.*, 184:2621–2633, 2013.
- [5] X. Antoine, C. Besse, and P. Klein. Numerical solution of time-dependent nonlinear Schrödinger equations using domain truncation techniques coupled with relaxation scheme. *Laser Physics*, 21:1–12, 2011.
- [6] W. Auzinger, H. Hofstätter, O. Koch, and M. Thalhammer. Defect-based local error estimators for splitting methods, with application to Schrödinger equations, Part III: The nonlinear case. *J. Comput. Appl. Math.*, 273:182–204, 2014.
- [7] G. Bao, G. Hu, and D. Liu. An h -adaptive finite element solver for the calculations of the electronic structures. *J. Comput. Phys.*, 231:4967–4979, 2012.
- [8] W. Bao and Y. Cai. Mathematical theory and numerical methods for Bose–Einstein condensation. *Kinet. Relat. Mod.*, 6:1–135, 2013.
- [9] W. Bao, S. Jiang, Q. Tang, and Y. Zhang. Computing the ground state and dynamics of the nonlinear Schrödinger equation with nonlocal interactions via the nonuniform FFT. *J. Comput. Phys.*, 296:72–89, 2015.
- [10] S.C. Brenner and L.R. Scott. *The Mathematical Theory of Finite Element Methods*. Springer-Verlag, New York, 2nd edition, 2002.
- [11] F. Brezzi and P. Markowich. The three-dimensional Wigner–Poisson problem: Existence, uniqueness and approximation. *Math. Methods Appl. Sci.*, 14:35–61, 1991.
- [12] R. Carles. On Fourier time-splitting methods for nonlinear Schrödinger equations in the semiclassical limit. *SIAM J. Numer. Anal.*, 51:3232–3258, 2013.
- [13] G. Cohen. *Higher-Order Numerical Methods for Transient Wave Equations*. Springer, Berlin–Heidelberg–New York, 2002.
- [14] J. Fang, X. Gao, and A. Zhou. A Kohn–Sham equation solver based on hexahedral finite elements. *J. Comput. Phys.*, 231:3166–3180, 2012.
- [15] J. Garcke and M. Griebel. On the computation of the eigenproblems of hydrogen and helium in strong magnetic and electric fields with the sparse grid combination technique. *J. Comput. Phys.*, 165:694–716, 2000.
- [16] L. Gauckler. Convergence of a split-step Hermite method for the Gross–Pitaevskii equation. *IMA J. Numer. Anal.*, 31:396–415, 2011.
- [17] W. Hackbusch. *Elliptic Differential Equations: Theory and Numerical Treatment*. Springer Verlag, Berlin–Heidelberg–New York, 1992.
- [18] E. Hairer, Ch. Lubich, and G. Wanner. *Geometric Numerical Integration*. Springer-Verlag, Berlin–Heidelberg–New York, 2002.
- [19] G.H. Hardy, J.E. Littlewood, and G. Polya. *Inequalities*. Cambridge Univ. Press, Cambridge, 1934.
- [20] D. Hochstuhl, C.M. Hinz, and M. Bonitz. Time-dependent multiconfiguration methods for the numerical simulation of photoionization processes of many-electron atoms. *The European Physical Journal Special Topics*, 223:177–336, 2014.
- [21] R. Illner, P.F. Zweifel, and H. Lange. Global existence, uniqueness and asymptotic behaviour of solutions of the Wigner–Poisson and Schrödinger–Poisson systems. *Math. Methods Appl. Sci.*, 17:349–376, 1994.
- [22] O. Karakashian and Ch. Makridakis. A space-time finite element method for the nonlinear Schrödinger equation: the discontinuous Galerkin method. *Math. Comp.*, 67:479–499, 1998.
- [23] O. Karakashian and Ch. Makridakis. A space-time finite element method for the nonlinear Schrödinger equation: the continuous Galerkin method. *SIAM J. Numer. Anal.*, 36:1779–1807, 1999.

- [24] T. Katsaounis and I. Kyza. A posteriori error control and adaptivity for Crank–Nicolson finite element approximations for the linear Schrödinger equation. *Numer. Math.*, 129:55–90, 2015.
- [25] O. Koch and Ch. Lubich. Analysis and time integration of the multi-configuration time-dependent Hartree–Fock equations in electron dynamics. ASC Report 4/2008, Inst. for Anal. and Sci. Comput., Vienna Univ. of Technology, 2008.
- [26] O. Koch and Ch. Lubich. Variational splitting time integration of the MCTDHF equations in electron dynamics. *IMA J. Numer. Anal.*, 31:379–395, 2011.
- [27] O. Koch, Ch. Neuhauser, and M. Thalhammer. Error analysis of high-order splitting methods for nonlinear evolutionary Schrödinger equations and application to the MCTDHF equations in electron dynamics. *M2AN Math. Model. Numer. Anal.*, 47:1265–1284, 2013.
- [28] K. Kormann. A time-space adaptive method for the Schrödinger equation. *Tach. Rep*, 23, 2012.
- [29] Ch. Lubich. On splitting methods for Schrödinger–Poisson and cubic nonlinear Schrödinger equations. *Math. Comp.*, 77:2141–2153, 2008.
- [30] R. McLachlan and R. Quispel. Splitting methods. *Acta Numer.*, 11:341–434, 2002.
- [31] M. Miklavčič. *Applied Functional Analysis and Partial Differential Equations*. World Scientific, Singapore, 1998.
- [32] P. Motamarri, M. Nowak, K. Leiter, J. Knap, and V. Gavini. Higher-order adaptive finite-element methods for Kohn–Sham density functional theory. *J. Comput. Phys.*, 231:6596–6621, 2012.
- [33] A. Pazy. *Semigroups of Linear Operators and Applications to Partial Differential Equations*. Springer-Verlag, New York, 1983.
- [34] S.M. Rankin III. Semilinear evolution equations in Banach spaces with application to parabolic partial differential equations. *Transactions of the AMS*, Volume 336(2):523-535, 1993
- [35] Y. Saad. Analysis of some Krylov subspace approximations to the matrix exponential operator. *SIAM J. Numer. Anal.*, 29(1):209–228, 1992.
- [36] V. Schauer. *Finite element based electronic structure calculations*. Universität Stuttgart, Inst. f. Mechanik (Bauwesen), Lehrstuhl I, 2014.
- [37] R. Sidje. Expokit: A software package for computing matrix exponentials. *ACM Trans. Math. Software*, 24(1):130–156, 1998.
- [38] H. Yu and A. Bandrauk. Three-dimensional Cartesian finite element method for the time dependent Schrödinger equation of molecules in laser fields. *J. Chem. Phys.*, 102, 1995.
- [39] Y. Zhou, Y. Saad, M. Tiago, and J. Chelikowsky. Parallel self-consistent-field calculations via Chebyshev-filtered subspace acceleration. *Phys. Rev. E*, 74:066704, 2006.